



DGS NEWSLETTER

Volume 15, Number 6 (Issue 133)
July-August 1991

Dallas, Texas

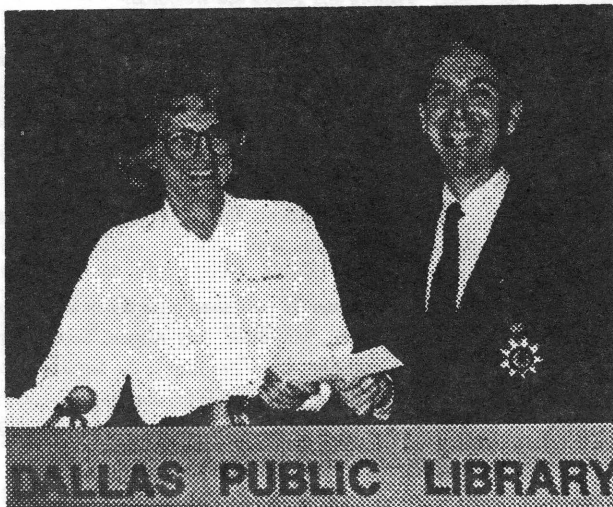
DGS Annual Gift to DPL Genealogy Section Totals \$15,000

On 20 May 1991, at the annual business meeting of the Dallas Genealogical Society (DGS), President Patricia Law Hatcher announced that the annual gift to the Genealogy Section of the Dallas Public Library would consist of three checks totaling \$15,000. This is the largest annual gift in DGS history.

A check for \$10,000 was presented to Lloyd DeWitt Bockstruck, Supervisor of the Dallas Public Library's Genealogy Section, to spend on genealogical books and microforms. A second check for \$1,000 was presented to Bockstruck for the Adopt A Book project. The third check for \$3,000 was donated to the special 1920 census project fund.

Gift Presented in Honor of Helen Lu

The \$10,000 gift was made in honor of Helen Mason Lu in recognition of her many hours of service and numerous gifts to DGS and the DPL Genealogy Section. For many years, Lu has been a guiding influence in DGS. She has served as president of DGS on three separate occasions, the last term being 1989-1990. In the past year she has donated much of her recent work on abstracting and publishing early church records to the society for publication, with the profits going to DGS. Lu is recognized as a guiding force behind many of the



Patricia L. Hatcher and Lloyd DeWitt Bockstruck

current DGS publications for sale.

\$1,000 Gift in Honor of Adrienne Jamieson

Hatcher announced that the \$1,000 donation to the Adopt A Book project was made in honor of Adrienne Bird Jamieson, in recognition of her many contributions to DGS. Jamieson has twice served as DGS president and for the past two years served as editor of *The Dallas Quarterly*. The Adopt A Book project began in 1987 after city budget cuts left little or no money in the budget to bind soft-bound books. Without first being hard-bound, these books and periodicals cannot be placed on the open shelves in the Genealogy Section for patrons to use. Adopt A Book urged each DGS member to contribute \$5 to bind a book of their choice (\$6.06 for periodicals) to aid the section in getting the books bound. This is an ongoing project of DGS. The \$1,000 gift will aid the section in playing "catch-up" for this year.

\$3,000 Gift to 1920 Census Project

DGS has committed \$3,000, as part of the annual gift, to the special fund to purchase the 1920 census in 1992. As previously announced in the May issue of the *DGS Newsletter*, DGS will add the \$3,000 to the gifts already received for this project and will purchase the census and soundex for Texas and the census for Alabama, Arkansas, Illinois, Indiana, Iowa, Kansas, Kentucky, Louisiana, Mississippi, Missouri, Nebraska, Ohio, Oklahoma, and Tennessee.

The \$3,000 was the DGS memorial gift made in memory of DGS deceased members.

Inside this issue:

	Page
President's Letter	62
New DGS Executive Board	63
DGS Profiles	64
From the DGS Mailbox	65
Guide to Resources in the Genealogy Collection:	
Periodical Exchange List of DGS, Part III	67
Invitation to Speakers	68
Queries	69



The President's Message by Margret Hancock Pearce

WHEW! The dog days of summer started early this year, and it appears they are here to stay. This is the time when the outgoing DGS board breathes a sigh of relief as they complete their board tasks and begin to sort files and materials to pass on to the new members of the incoming board.

June is a transitional time for the board members as we organize and focus on our goals for the coming year. Even though our first meeting will not be held until September, we are communicating; and it is wonderful to hear the enthusiasm these folks are bringing to their jobs. When we talk, I hear their excitement; I hear new and innovative ideas on ways to help the society grow and prosper.

There is excitement about the 1991 fall symposium and the 1992 spring seminar. As well there should be! On 20 April 1991, DGS experienced its most successful spring seminar in the long history of our Society and raised over \$19,000. This is significant, as the profit from our seminars is the source of our annual gift to the Dallas Public Library's Genealogy Section (see story on page 61). In a year when the section's budget was reduced by more than one-half (from \$40,000 to \$17,000), it was a much needed gift.

DGS is a non-profit organization that functions with objectives that are established by our bylaws. Two of these objectives are to raise standards of genealogical research through educational programs and workshops and also to support the Genealogy Section of The Dallas Public Library. Therefore, it is our great pleasure and honor to be able to support our Genealogy Section in this generous manner.

We couldn't provide this support without our wonderful members and all of you who came from near and far to attend our seminars. THANK YOU TO EACH AND EVERY ONE OF YOU WHO CAME, AND THANK YOU TO ALL OF THOSE HARD WORKERS WHO MADE IT POSSIBLE. (We love the "thank you's" and notes of congratulations; they made us feel *really* good!)

Each of us who heard Mrs. Mills benefitted from the day, and those benefits will continue to grow as a result of the gift which makes possible the acquisition of books and microforms for the library.

And *NOW*, it is my pleasure to announce that our 1992 Spring Seminar is scheduled to be held on Saturday, 28 March 1992, at the Richardson Civic Center, and our distinguished speaker will be Marsha Hoffman Rising.

The wheels are in motion. We are excited. Please plan to be with us!

Dallas Genealogical Society Post Office Box 12648 Dallas, Texas 75225-0648

Board of Directors:

Margret Hancock Pearce	President
Linda Shaddock Rogers	Executive Vice President
William E. "Bill" Benson	V-P for Programs
Dorothy Odom Bruce	V-P for Membership
Margaret Ann Hudson	Editor, <i>The Dallas Quarterly</i>
Sammie Townsend Lee	Editor, <i>DGS Newsletter</i>
Cecelia Stephens	Recording Secretary
Arthur H. "Art" Rubeck	Treasurer
Dorislee Hoffpauer	Books and Forms
Joe Sissoms	Computer Interest Group
Lloyd DeWitt Bockstruck	Library Liaison
Robert H. "Bob" Maybrier	Mailings
Edwina Moseley Dyes	Publications
John Sellers	Publicity
Nancy Hendrix Mobley	Research
Millard D. Noell	Special Projects

Appointed by the President:

J. Bruce Moseley	Parliamentarian
June Anderson Shipley	Co-Chairman for Workshops
Markaleeta Stevenson	Arrangements
	Arrangements

Meetings: Founded in 1955, the Dallas Genealogical Society (DGS) is the oldest organization of its kind in Texas. It is a nonprofit, tax-exempt organization. The Society meets at the Dallas Public Library, 1515 Young Street, Dallas, on the 4th Monday, September through May, except for December. Visitors and guests are welcome.

Membership: Individuals, libraries, or societies may apply for membership. Annual dues are \$12 for the calendar year if paid by January 31; after January 31, they are \$14. New member dues and renewals should be mailed to the Society at Post Office Box 25556, Dallas, TX 75225-1556, and marked to the attention of the V-P of Membership. All current members receive *The Dallas Quarterly* and the *DGS Newsletter*.

Newsletter: The *DGS Newsletter* is published nine times a year in January, February, March, April, May-June, July-August, September, October, and November-December. Copy deadline is the 5th day prior to the month of publication. All correspondence for the *DGS Newsletter* should be mailed to the Society at Post Office Box 12648, Dallas, TX 75225-0648 and marked to the attention of:

Sammie Townsend Lee

Newsletter Editor

DGS Board Elected for 1991-1992

The following officers and directors were elected at the 20 May 1991 annual business meeting to guide DGS for 1991-1992.

President: Margret Hancock Pearce. Pearce served DGS as Vice-President for Programs (1991), Co-Chairman of the DGS Fall Symposium (1990) and Spring Seminar (1991), Vice-President and Editor of the *DGS Newsletter* (1988-1990), and Vice-President for Membership (1987-1988). In collaboration with Madilyn Crane, Pearce has published two books for the Griffin Family Organization.

Executive Vice-President: Linda Shaddock Rogers. Rogers served as Vice-President for Membership (1990-1991), Registration Chairman for the DGS Spring Seminar (1990 and 1991), and compiled the *1991 DGS Membership Roster*. Her book, *Clark County, Arkansas, Arkadelphia and Environs, A Journal by James A. Fortson, Recorded 1875-1897*, won an award in the 1991 DGS Annual Book Awards in May.

Vice-President for Programs: William E. "Bill" Benson. After a year's absence, Benson returns to the DGS board. He served as Director of Publicity (1989-1990). Benson is an architect and put his designing skills to work for DGS by designing our symposium and seminar fliers and posters.

Vice-President for Membership: Dorothy Odom Bruce. Bruce returns to this position after a year's absence from the board. She previously served as Vice-President for Membership, 1988-1990. Bruce served as Registration Chairman for the Fall Symposiums (1988, 1989, and 1990) and for the Spring Seminar (1989). She serves as the Texas representative for the Odom Family Association.

Vice-President for *The Dallas Quarterly*: Margaret Ann Schmidt Hudson. Hudson served as Director of Publications (1988-1989), Parliamentarian (1987-1988), Director of Exchanges (1985-1986), President (1983-1984), Vice President and Editor of *The Dallas Quarterly* (1982-1983).

Vice-President for the *DGS Newsletter*: Sammie Townsend Lee. Lee continues for a second term as the editor of the newsletter. She served as DGS President (1988-1989), Executive Vice-President (1987-1988), Vice-President for Membership (1986-1987), and Recording Secretary (1985-1986). Lee was a speaker at the 1990 DGS Fall Symposium and has been a DGS program lecturer. She is a staff member of the Genealogy Section of the Dallas Public Library.

Recording Secretary: Cecelia Stephens. Stephens begins her first term on the DGS board. She works for

AMR Travel and recently attended the NGS Conference in Portland, Oregon.

Treasurer: Arthur H. "Art" Rubeck. Rubeck continues for a second term as Treasurer. He was a speaker at the 1990 DGS Fall Symposium and has been a DGS program and computer interest group lecturer. Art serves as the Disk Librarian for the Informart Genealogy Computer Users Group.

Director of Books and Forms: Dorislee Hoffpauer. Hoffpauer continues for a second term as Director of Books and Forms. She is a retired Junior High School Librarian for the Richardson ISD and teaches Basic Genealogy at Brookhaven Community College.

Director of the Computer Interest Group: Joe Sissom. Sissom begins his first term on the DGS board. He has a background in communications and his use of computers on-the-job sparked his interest in personal computer usage.

Library Liaison: Lloyd DeWitt Bockstruck. Bockstruck, Supervisor of the Genealogy Section of the Dallas Public Library returns to the board after a year's absence as the Library Liaison. He is a popular DGS program lecturer and a nationally-known genealogical lecturer and educator.

Director of Mailings: Robert "Bob" Maybrier. Maybrier begins his first term on the DGS board. He began his research a few years ago after retiring from a firm in Indiana and returning to make his home in Dallas.

Director of Publications: Edwina Moseley Dyes. Dyes served as Director of Research (1989-1991) and has been abstracting the Dallas County deed books for publication by DGS.

Director of Publicity: John Sellers. Sellers continues for a second term in this position. He is employed in marketing.

Director of Research: Nancy Hendrix Mobley. Mobley begins her first term on the DGS board. She is a ten-year member of DGS and taught for the Dallas Independent School District.

Director of Special Projects: Millard D. Noell. Noell begins his first term on the DGS board. He is co-author of the family history, *The Noell Family-A Westward Journey from the Netherlands, Virginia, Georgia to Texas*. He is retired from Texas Instruments.



L to R: Benson, Sissom, Maybrier, Bockstruck, Rubeck, Stephens, Pearce, Noell, Rogers, Hudson, Dyes, Bruce, Hoffpauer, Mobley, Lee.

DGS Profiles

Margaret Ann Thetford Retires from "Family Tree" Column

Margaret Ann Thetford needs no introduction to area genealogists. Since 1979, her byline has appeared on the twice-weekly "Family Tree" column in *The Dallas Morning News*. On 30 May, after eleven years of writing the award-winning column, Thetford retired to pursue other interests and projects and to travel with her recently retired husband Conrad.

During the eleven years that she wrote "Family Tree," interest in genealogy has grown at an amazing rate. It is now listed as one of the top hobbies in the United States. Through her column, Thetford has been able to reach local family researchers, both beginners and experienced genealogists, and inform and educate them to old and new genealogical sources, as well as resources available in our area and nation wide.

In her last column on 30 May, Thetford wrote, "You may be interested to know that through this column, genealogical books, periodicals, newsletters, and microforms worth more than \$13,000 have been donated to the genealogy collection of Dallas' J. Erik Jonsson Central Library." This does not begin to enumerate the large number of researchers she has assisted through queries, notices of family reunions, notices of genealogical, historical, patriotic, and lineage society meetings, genealogy classes and other educational opportunities, and so on.

Thetford, whose own interest in family history began when she attended a family reunion and realized how little her relatives knew about their family's lineage, has had a profound influence on genealogy in the Dallas area and on the Dallas Genealogical Society. She is a life member and past president of DGS. In 1986 she co-chaired the Sesquicentennial Family History and Genealogy Exhibit and Competition, sponsored by DGS and the State Fair of Texas. Her contributions to DGS are numerous and would fill this page. Suffice to say, Margaret Ann Thetford has made a large contribution to genealogy and to Dallas area genealogists.

In her own words: "What a wonderful interest this is! After all, we all have ancestors, so we have the raw material with which to build this hobby. It's not a hobby that requires a special talent or skill--just patience, perseverance and a little luck now and then.

"If you get stuck on one ancestral line, you can always switch and start working on another one. You'll never be finished...I wish you happy ancestor-hunting and speedy solutions to all your family history puzzles."

We certainly appreciate Margaret Ann Thetford's dedication to genealogy, to the library's genealogy collection, and to DGS. We have all profited by it. Thanks for a job well done!

New Columnist for "Family Tree"

On 1 June, Lloyd DeWitt Bockstruck began writing the "Family Tree" column for *The Dallas Morning News*. The column appears each Saturday in the Today section of the *News*.

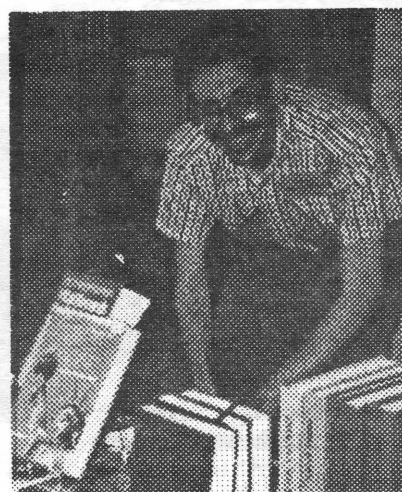
Lloyd Bockstruck, DGS Library Liaison and a life member, is another genealogist who needs no introduction to local family researchers. As the head of the genealogy collection of the J. Erik Jonsson Central Library since 1979, he has assisted most of us in our search for our roots, either personally or through his lectures and articles. He is a sought-after national speaker on all aspects of genealogical research and in June, delivered the after-dinner speech at the banquet of the National Genealogical Society's annual conference in Portland, Oregon. Since 1974, he has taught genealogy courses at Southern Methodist University's School of Continuing Education and been on the faculty of the Institute of Genealogy and Historical Research in Birmingham, Alabama.

The "Family Tree" column, under Bockstruck's authorship, will benefit from his experience in tracing family lineages, knowledge of genealogical source materials, instructional talents, and his wit. The column is in good hands and its future looks bright.

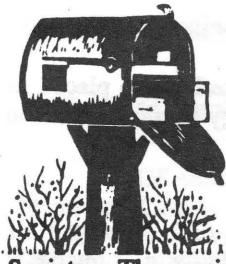
AGLL Has Local Distributorship

Bradley Steuart, President of the American Genealogical Lending Library (AGLL) of Bountiful, Utah, has appointed Kelvin L. Meyers as local field representative for their products. Meyers, a DGS past president, will represent AGLL in north and east Texas and southern Oklahoma.

Selling by mail order and at local workshops and seminars, AGLL features genealogical books and forms, microforms, equipment such as microfilm and microfiche readers, and other products useful to the family researcher. AGLL members receive discounts on purchases and can participate in a microfilm rental program. Libraries and individuals interested in the AGLL services can contact Meyers at 4150 Wycliff #104, Dallas, TX 75219, 214/522-0877.



Kelvin L. Meyers



From the DGS Mailbox

Austin Genealogical Society Sets Seminar

Dr. George K. Schweitzer will be the featured speaker at the annual seminar of the Austin Genealogical Society. The seminar will be held on 10 August 1991, beginning at 8:00 a.m. at the Doubletree Hotel, 6505 IH-35 North in Austin, Texas. Dr. Schweitzer's topics will be "Migration Routes and Settlement Patterns," "Pennsylvania Genealogical Sources," and "War of 1812 Genealogy." Known for lecturing in authentic period dress, Schweitzer will wear a different costume for each lecture.

Pre-registration fee, if received by 1 August, is \$25; thereafter and at the door, \$28. The fee includes lunch. Space is limited to 300. Make checks payable to AGS 1991 Seminar and send to Adena W. Hardin; 1991 AGS Seminar Chairman; P. O. Box 49650; Austin, TX 78765.

Ark-La-Tex to Feature Robert Young Clay

The annual seminar for the Ark-La-Tex Genealogical Association will be held on Friday and Saturday, 9-10 August 1991, at the Holiday Inn (Spring Street exit from I-20 in downtown Shreveport, LA). Registration will begin at 5:00 on Friday afternoon. A banquet is scheduled for Friday evening, followed by the lecture, "Genealogical Do's and Don'ts." The featured speaker will be Robert Young Clay of the Virginia State Library. Clay's topics on Saturday will be "Virginia Migration" and "Why Genealogists Fail." Also, Dr. Morgan Peoples, Professor Emeritus of Louisiana Tech at Ruston, will speak on "Tracking Uncle Earl" from his book *Louisiana Politics and Governor Earl Long*.

The registration fee, including the banquet and lunch on Saturday, is \$35. Send reservations to A-L-TGS, P. O. Box 4462, Shreveport, LA 71134-4462 or call Conference Chairman Patricia Minton Bettis at 318/861-7570. A special hotel conference rate of \$59 has been arranged with the Holiday Inn. Call 318/222-7717.

German-Texan Heritage Society Sets Date for Annual Meeting

The 1991 annual meeting of the German-Heritage Society will be held in Corpus Christi, Texas, on 6-8 September 1991. The site of the meeting will be the Holiday Inn, Emerald Beach.

The German-Texas Heritage Society begins its 13th year with an invitation of membership to all persons interested in the German heritage of Texas. A journal is

published three times yearly and features a genealogical section which includes hints about research in German-speaking counties, as well as Texas and the U.S. Also included are brief family histories submitted by members and a genealogy exchange column. A newsletter containing dated material is published several times yearly also.

For membership or annual meeting information, write GTHS at their state office at 1011 Meredith Drive, Suite C; P. O. Box 262; Manchaca, TX 78652.

1991 Genealogy Tour to the Nation's Capital

A week-long Washington, DC genealogy tour has been announced for 20-27 October 1991 by Bill R. Linder. The tour includes sessions at the National Archives, Library of Congress, and the DAR Library. Personal assistance is available from Linder, program organizer, author of *How to Trace Your Family History*, and formerly director of central reference at the National Archives. Assisting is Antoinette J. Segraves, executive director of the Genealogical Society of Pennsylvania.

The tour begins with an opening social. Also, the group will enjoy an evening at the John F. Kennedy Center for the Performing Arts and a closing dinner. Some evenings and all day Saturday will be open time for group members to explore Washington on their own.

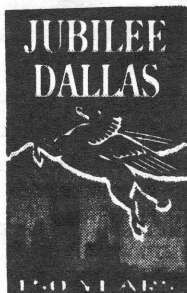
The program cost for the 7-night package is \$675 per person, based on double occupancy. For details write Bill Linder; 4615 South 9th Street; Arlington, VA 22204-3001.

Ancestry Research Course in Dublin, Ireland

James Ryan of Irish Ancestry Research Courses in Dublin, Ireland has announced the third annual "Irish Family History Research Course." The course will be held 6-11 October 1991 in Dublin. Ryan, Course Director, is author of *Irish Records Sources for Family and Local History* and *Tracing Your Dublin Ancestors*. He has lectured on Irish research in Ireland and the U.S.

The course program includes an outline of the social history of Ireland, with emphasis on the 18th and 19th centuries. It includes source records, such as church records, census data, newspapers, commercial directories, gravestone inscriptions, and published family histories, available in Ireland. Major archives will be visited and the content and use of their records demonstrated. Also visited will be the National Library of Ireland, Genealogical Office, The Registry of Deeds, and the Registrar Generals Office.

For information, contact Brendan Wafer at Stratford House; Barnhill Road; Dalkey; Co. Dublin; Ireland.



DGS Mailbox...continued

Jubilee Dallas

From *The County Chronicle*, (18:2, Summer 1991), the newsletter of the Dallas County Historical Commission: "November 1991 will be a month-long celebration of

Jubilee Dallas in honor of the City's 150 birthday.

"An opening ceremony at Thanksgiving Square on November 1 will be followed by a historic Jubilee Walk on November 9; a lecture series coordinated by the Dallas Historical Society; a Jubilee Memorial concert performed by the Dallas Symphony Orchestra, the Dallas Symphony Chorus, and the Junior Black Academy's Symphonic choir, at the Meyerson Symphony Center; a Jubilee Naturalization Ceremony for an estimated 800 people; and a closing ceremony at the Hall of State to honor the City's leadership.

"If you want to be involved, call 214/508-8350 and volunteer."

Census Age Searches

From the United States Department of Commerce, Bureau of the Census: The U. S. Census Bureau's age search function is being relocated from Pittsburg, Kansas, to Jeffersonville, Indiana. Effective 1 August 1991, applications for age search should be directed to Bureau of the Census, P. O. Box 1545, Jeffersonville, In 47131.

New Officers for Local Societies

The Collin County Genealogical Society has elected the following officers for 1991-1992: President, Susan Long Brown; First Vice-President, Peggy Stone Wilkey; Second Vice-President, Paula S. Parke; Corresponding Secretary, Theresa Brown Luethye; Recording Secretary, Lera Kate Hutcherson Powell; Treasurer, Ned L. Hoover; Parliamentarian, Gwen Blomquist Neumann. The CCGS address is P. O. Box 865052, Plano, TX 75086-5052. Dues are \$12.50 payable by 1 July.

The Garland Genealogical Society has elected the following officers for 1991-1992: President, Nita McNatt; Vice-President for Programs, Geraldine Joslin; Vice-President for Membership, Mary Sutherland; Vice-President for Publicity, Dorothy Rushing; Vice-President for Computer Interest, Ray Burton; Vice-President for the Quarterly, Jane Kelley; Secretary, Jo Delmar; Treasurer, Margaret Koriath; Parliamentarian, Dorothy Range. The GGS address is P. O. Box 461882, Garland, TX 75046. Dues are \$10.

Family Publications and Associations

All family newsletters and quarterlies are placed in the vertical files in the DPL Genealogy Section under the surname listed.

Brixey Family

We received the first two issues, (1:1, January 1991 and 1:2, April 1991) of *The Brixey Bulletin*, a quarterly newsletter for persons with Brixey ancestry. It is edited by local genealogist, Barbara Brixey Wylie, and published by John Wylie Consulting. The issues we received contained information on John Brixey (the first known immigrant), information about the origin of the name, queries, announcements, ancestor charts, how-to information, and much more. A one-year subscription (published January, April, July, and October) is \$10, mailed to Barbara Brixey Wylie, 3034 High Plateau Drive, Garland, TX 75044-5828.

Parish Family

Another new family newsletter was sent to us by Rev. Brent L. Parrish. Two issues of *Parrish Family Update*, (May 1991 and June 1991) were received, each containing four pages. Included in these issues were goals of the publication, origin of the name, a listing of publications on Parrish family histories, new members, queries, and family news. The newsletter appears to be a monthly publication. Subscription is \$12 (\$1 per issue), payable to the Parrish Family Research Center, P. O. Box 116, Sheldon, WI 54766.

Townsend Family

Local genealogist, Larry W. Townsend, has begun a newsletter, *Tracking the Townsend Trail*, devoted to the descendants of James Townsend and Nancy Askew of Hopkins County. James Townsend was born about 1847 in Texas. If you are interested in this family or think you may be descended from this couple, contact Larry Townsend at 3637 Trinity Mills # 926, Dallas, TX 75287, 214/306-0596. He would love to hear from you.

Ballew Family

The Ballew Family Association of America sent us a copy of the 10th anniversary issue of the *Ballew Family Journal*. Membership in the association is \$25 for initial membership and \$10 annual dues payable 1 January. The association has a membership of more than 190 families in 29 states and features six annual reunions and a yearly journal. The journal contains queries, lineage charts, family articles, dates for family reunions, and names and addresses of Ballews nationwide.

Applications for membership should be sent to The Ballew Family Association of America, 2711 Leslie Drive NE, Atlanta, GA 30345.

Guide to Resources in the Dallas Public Library Genealogy Collection

Periodical Exchange List of the Dallas Genealogical Society, Part III

DGS sends *The Dallas Quarterly* and the *DGS Newsletter* to more than 80 other genealogical societies in the United States and Canada in exchange for their publication(s). That society's publication is placed in the Genealogy Section of the Dallas Public Library (DPL). This list reflects the name and address of the exchange society, name and frequency of their publication, DPL call number, and holdings owned by DPL. Most volumes listed will be located on the open shelves in the Genealogy Section. The most recent volumes may be in limited access waiting to be sent to the bindery. If you cannot locate a desired issue, ask a staff member for assistance.

This guide is published in three issues of the DGS Newsletter. Part I appeared in Volume 15, Number 4, April 1991, and part II in Number 5, May-June 1991. Part III consists of the Texas exchanges and new additions.

Texas



- Amarillo Genealogical Society**, P.O. Box 2171, Amarillo, TX 79189
 Publication: *Reflector*, Call # 929.3764 R332
 Holdings: Quarterly, Vol. 1-30, 1959-1988; By-monthly Newsletter, 1989-Current
- Athens Genealogical Organizations**, Henderson County Library, 121 S. Prairieville Street, Athens, TX 75751
 Publication: *Texas A.G.O.*, Call # 929.37642 T355
 Holdings: Vol. 3-10, 1983-1991
- Caldwell County Genealogical Society**, 215 S. Pecan Avenue, Luling, TX 78648
 Twice-yearly publication: *Plum Creek Almanac*, Call # 929.3764 P734
 Holdings: Vol. 1-8, 1983-1991
- Central Texas Genealogical Society**, 1717 Austin Avenue, Waco, TX 76701
 Quarterly publication: *Heart of Texas Quarterly*, Call # 929.3764 F198
 Holdings: Vol. 1-33, 1958-1991(formerly, *The Family Tree*)
- Chaparral Genealogical Society**, Box 606, Tomball, TX 77375
 Quarterly publication: *Roadrunner*, Call # 929.3764 R628
 Holdings: Vol. 1-17, 1974-1991
- Collin County Genealogical Society**, P.O. Box 864752, Plano, TX 75086
 Quarterly publication: *Collin Chronicles*, Call # 929.37645 C699
 Holdings: Vol. 1-10, 1981-1991
- Coryell County Genealogical Society**, 811 E. Main Street, Gatesville, TX 76528
 Quarterly publication: *Coryell Kin*, Call # 929.37645 C833
 Holdings: Vol. 2-8, 1983-1991
- Ellis County Genealogical Society**, P.O. Box 385, Waxahachie, TX 75165
 Quarterly publication: *Searchers & Researchers of Ellis County*, Call # 929.37642 S439
 Holdings: Vol. 1-13, 1978-1991
- Fannin County Genealogical Society**, 605 Agnew, Bonham, TX 75418
 Quarterly publication: *FCGS Quarterly*, Call # 929.37642 F213
 Holdings: Vol. 1-7 1982-1991
- Fort Worth Genealogical Society**, P.O. Box 9767, Ft. Worth, TX 76147
 Quarterly publication: *Footprints*, Call # 929.10976 F689
 Holdings: Vol. 1-33, 1958-1991 (Monthly newsletter, *Footsteps*)
- Hood County Genealogical Society**, P.O. Box 1623, Granbury, TX 76048
 Quarterly newsletter: *HCGS Newsletter*, Call # none, must request
 Holdings: 1983-1991
- Johnson County Genealogical Society**, P.O. Box 10246, Cleburne, TX 76033
 Quarterly publication: *Finders Keepers*, Call # 929.37645 F494
 Holdings: Vol. 3-7, 1986-1991
- Kaufman County Genealogical Society**, P.O. Box 337, Terrell, TX 75160
 Quarterly publication: *Kaufman County Konnections*, Call # 929.37642 K21
 Holdings: Vol. 2-9, 1983-1991
- Mesquite Historical/Genealogical Society**, P.O. Box 165, Mesquite, TX 75149
 Quarterly publication: *The Mesquite Tree*, Call # 929.37642 M582
 Holdings: Vol. 1-26, 1965-1991
- Mid-Cities Genealogical Society**, Box 407, Bedford, TX 76095
 Quarterly publication: *Tale of Mid-Cities*, Call # 929.10973 T143
 Holdings: Vol. 1-11, 1979-1991

- Montgomery County Genealogical Society**, P.O. Box 751, Conroe, TX 77305
 Quarterly publication: *Herald*, Call # 929.37641 H531
 Holdings: Vol. 1-14, 1978-1991
- Navarro County Genealogical Society**, P.O. Box 2278, Corsicana, TX 75110
 Quarterly publication: *Navarro Leaves & Branches*, Call # 929.37642 N322
 Holdings: Vol. 1-13, 1978-1991
- North Texas Genealogical Association**, P.O. Box 4602, Wichita Falls, TX 76309
 Quarterly publication: *North Texas Trail Tracers*, Call # 929.3764 N867
 Holdings: Vol. 1-7, 1985-1991
- Parker County Genealogical Society**, 1214 Charles Street, Weatherford, TX 76086
 Quarterly publication: *Trails West*, Call # 929.37645 T767
 Holdings: Vol. 1-21, 1970-1991
- Permian Basin Genealogical Society**, 321 West Fifth, Odessa, TX 79761
 Twice-yearly publication: *The Treeshaker*, Call # 929.10976 T 786
 Holdings: Vol. 1-5, 1963-1967; Vol. 8, # 1,3,4; Vol. 22-23, 1984;
 Vol. 27-28, 1989-1991
- Rockwall County Genealogical Society**, P.O. Box 471, Rockwall, TX 75087
 Quarterly publication: *Heritage Trails*, Call # none, must request
 Holdings: Vol. 8, # 1,2, 1990
- San Antonio Genealogical/Historical Society**, P.O. Box 17461, San Antonio, TX 78217
 Quarterly publication: *Our Heritage*, Call # 929.10976 O93
 Holdings: Vol. 1-31, 1959-1991
- Southeast Texas Genealogical/Historical Society**, P.O. Box 3827, Beaumont, TX 77704
 Quarterly publication: *Yellowed Pages*, Call # 929.1 Y43
 Holdings: Vol. 1-20, # 1 & 2, 1971-1991
- Victoria County Genealogical Society**, 302 N. Main Street, Victoria, TX 77901
 Quarterly publication: *Victoria Crossroads of South Texas*, Call # 929.3764 V645
 Holdings: Vol. 2-11, 1981-1991

New Additions to the Exchange List

Genealogical Society of Northeast Texas
 PJC Box 187
 2400 Clarksville
 Paris, TX 75460-8298

Leon County Genealogical Society
 P. O. Box 500
 Centerville, TX 75833

Northern Arizona Genealogical Society
 P. O. Box 695
 Prescott, AZ 86302

DGS is interested in adding about ten more exchange societies to our current list. If you are aware of a genealogical publication that would be valuable to the DPL Genealogy Section, please let the Director of Special Projects know by submitting the following information in writing: the name and address of the society and the name, size, and frequency of their publication(s).

Invitation to Speakers

The Dallas Genealogical Society is issuing an invitation for speakers with program proposals for the 1991 DGS Fall Symposium and Beginners Workshop to be held this November. The invitation is open to both members and nonmembers. Proposals can include lectures, workshops, panel discussions, or video presentations. Each program must be one hour in length with no more than four one-hour segments for workshops.

Each proposal should include a profile on the speaker(s), an abstract of the lecture or presentation, and other relevant information. Questions and proposals should be sent to DGS 1991 Fall Symposium, c/o Barbara Baylis, P. O. Box 12648, Dallas, TX 75225-0648. The deadline for submitting proposals is 1 September 1991.

Queries

Queries do not require a Texas connection and are free to members of the Dallas Genealogical Society (DGS). Nonmembers should include \$3 for each query. DGS reserves the right to abbreviate and condense queries and assumes no responsibility for their accuracy. Send as many queries as you wish, and they will be printed as space permits. Mail all queries: Editor, *DGS Newsletter*, P. O. Box 12648, Dallas, TX 75225-0648.

LEDFORD McGRADY

Seeking information on the families of Zeb LEDFORD, born 1847/8 in Yancey Co, NC; died after 1900, possibly OK; and wife Catherine/Katherine McGRADY, born 1854/5 in KY; married Dec 1873 in Barry Co, MO. Children: Clara, born 1875 in TX; Harriet, born 1877 in TX; and Lura, born 1880 in TX. Zeb married (2) Mollie (need surname), born 1855 in TX. Children: Maud, born 1884 in Indiana Territory; Sofa, born 1887 in Indiana Territory; and Luther, born 1890 in Indian Territory. Zeb lived in Yancey Co, NC in 1850, Marion Co, AR in 1860, where in 1870 (possibly Barry Co, MO), Dallas, Co, TX in 1880, where in 1890, Chickasaw Nation Indian Territory in July 1900. Where is Zeb buried? What happened to his descendants?
Mary Ellen Ledford; 702 Fouts Drive; Irving, TX 75061

LEDFORD LORD ALLEN HART BROMLEY BURCH SIMPSON

Seeking information on families of Moses M. LEDFORD, born 1841/4 in NC; died 1925 in Byars, OK; and wife Sabra, born 1844/5 in TN; died late 1900 or early winter 1901 in a fire in the home. Children: Samuel D., born 1868/9, died 1935 in Byars, OK, married ca. 1897 Mattie LORD, born 1877, died 1927; Laraceena who married an ALLEN; Geri who married a HART; John Thomas, born 1882, possibly Denton Co, TX, married Minnie Lee BROMLEY; Mozella, born 1889, married George Washington BURCH in 1907; Ada, born 1891 in TX, died in CA, married a SIMPSON. Moses, Zeb, Curtis, and Mac LEDFORD were brothers to James Kenneth LEDFORD who married in AR (1) Darnellia BASHAM, (2) Mary Elizabeth BRYANT.
Mary Ellen Ledford; 702 Fouts Drive; Irving, TX 75061

McDONALD FINNEY YOUNG

Wilson McDONALD, born circa 1805 in TN, and Jane FINNEY, born circa 1804 in TN, were married about 1821. They were the parents of Martha Sue MacDONALD, born 1847 in TN; died 1925 in TX; married 14 Jan 1869 in Rutherford Co, TN to Samuel YOUNG, born 1842 in Putnam Co, TN; died circa 1916; buried with Martha Sue in Rosemond Cemetery in Commerce, Hunt Co, TX. Does anyone know the parents, counties of birth, and complete dates of birth and death for Wilson MacDONALD and Jane FINNEY? Also, need dates of birth and death for Samuel YOUNG and Martha Sue MacDONALD.

Linda D. Willis; 6919 Townbluff; Dallas, TX 75248

HURT CAVE BASS BELL

Seeking descendants and information on family of William HURT, born circa 1780 in SC and his wife, Lucy (need maiden name), born circa 1785 in VA. They migrated to Monroe Co, AL and were the parents of Richard HURT, born 22 Jun 1824 in Monroe Co, AL; died 13 Mar 1897 in Milam Co, TX. Richard married, about 1845, Elizabeth CAVE, born 29 Jan 1829 in Clarke Co, AL; died 30 May 1877 in Milam Co, TX. Would like to find information on the parents of Elizabeth in AL. Richard and Elizabeth migrated about 1850 to Clarke Co, MS, then Milam Co, TX. Found Henry W. CAVE, born 1768 in VA; married Nancy BASS, 25 Feb 1826 in Marengo Co, AL. Elizabeth HURT named a daughter Nancy. Henry W. CAVE was possibly the son of John CAVE and Mildred BELL of VA. Need more information to prove this. Can anyone help?

Linda D. Willis; 6919 Townbluff, Dallas, TX 75248

STOVALL BERRY DYKES HUGHS

Thomas Hugh STOVALL, born circa 1803 in Union Co, SC; died circa 1880 in Nacogdoches Co, TX; came to Texas in the 1830's and married in Nacogdoches on 11 Jan 1841 to Roda V. (BERRY) DYKES, widow of Lovick P. DYKES. Roda, born circa 1810 in IL, was the daughter of Andrew Jackson BERRY and Roda HUGHS, both born in NC. Need complete dates and places of birth, death, and burial. Need names of parents of Andrew Jackson BERRY and Roda HUGHS, where they migrated to in IL, and when they came to Nacogdoches.

Linda D. Willis; 6919 Townbluff; Dallas, TX 75248

**SHIPP
CASNER**

Seeking information on SHIPP family of Blanco, Gillespie, Llano, and San Saba Counties, TX, 1860-1920's, especially brothers William A. SHIPP (wife Martha Ellen CASNER) and Thomas SHIPP (wife Isabella) and their children whose names include Garrett, Munselle, Moss, Lewis, and Camplain. Many family members throughout TX are working on compiling all available information and contacting all known descendants.

Brian and Nancy Cunningham; 5634 Richard; Dallas, TX 75206

**OLIVER
ARCHER
FULLER
MOORE
STEWART**

Seeking information on James Madison ARCHER and his wife Lucinda Jane OLIVER. Resided in Wise Co, TX in 1880 and Montague Co, TX in 1888. It is believed they died in Texas, possibly Spanish Fort, TX, about 1889, just before several of their children moved to OK. Family came from MO to Tarrant Co, TX about 1852. Two sons died in Civil War. Other children: Martha E., born 1843, married Webster "Charlie" FULLER; A. J. (female), born circa 1844; Mary, born circa 1849, married John MOORE; Thomas Jefferson, born 4 Jan 1858, married Martha Jane STEWART; Robert Lee, born 6 Oct 1863, married Jenny Lee STEWART. Would like to know dates of death and places of burial for James and Lucinda.

Ida Crawford Madison; 1522 Silverleaf; Carrollton, TX 75007; 214/492-4292

**OLIVER
HOLMAN/
HOLEMAN**

Need information regarding the death and burial places of James OLIVER and wife Rachel HOLMAN/HOLEMAN. They may have died in Tarrant Co, TX. They moved to TX from Taney Co, MO; lived in McLennan Co, TX; moved back to MO; and came back to TX in 1870's just before both died. James thought to have died in Jun 1877; Rachel in Jan 1878.

Ida Crawford Madison; 1522 Silverleaf; Carrollton, TX 75007; 214/492-6292

**WILLIAMS
BATCHELOR
DAWDY**

Seeking information and parents of James (H.?) WILLIAMS from Stoddard Co, MO. He married on 5 Jan 1860 in Ellis Co, TX, to Mary Jane BATCHELOR, born circa 1843. He died circa 1863, possibly in Civil War. Was he a member of the 18th Calvary? Children: Francis Marion, born 25 Dec 1861, died 26 Nov 1929; Eliza J., born circa 1863. Lived in Lancaster, TX. Mary married (2) Allanson DAWDY. Need date of death and place of burial of Mary.

Rhonda L. Stephens Morris; 2006 Bridger Drive; Mesquite, TX 75149

**JAMES
FOSTER**

Seeking information on a great aunt, Alice JAMES who is believed to have come to TX in 1912 from London, England. She was a nurse in England and went to U.S. with a man named FOSTER. At the time, her family was living in Stratford, in the East End of London. Nothing has been heard of either of them since. She may have married Mr. FOSTER. Any information appreciated.

Mrs. G. E. Joy; 21 Homefield Road; Warlingham, Surrey CR3 9HU

**RIVERS
HAMMOCK**

Seeking any information on the RIVERS or HAMMOCK families who lived in the Denton County, TX area during the late 1800's to early 1900's.

Wanda J. Burritt; 2339-C Coral Avenue, NE; Salem, OR 97305

**ROSEBERRY
HUTCHINS**

Seeking information and ancestors of J. W. ROSEBERRY, born Nov 1852 in MS; married circa 1882 to Elizabeth (need maiden name), possibly born Aug 1866 in Indianola, TX. they resided in Wharton, TX on 1900 census; she was a widow on 1910 census. Their grandson Fabius Roseberry HUTCHINS resided in Garland, TX for 25 years before his death in 1977.

Kay Pacheco; HCR 4, Box 517; Beeville, TX 78102; 512/358-8216

[Ed. Note: A pedigree chart accompanied this query. Surnames on chart are: HALL, SMITH, COLE, THOMAS, POND, HOWELL, TUTTLE, and JORDAN. The chart has been placed in the vertical files in the DPL Genealogy Section in the file marked "HALL."]

JENKINS

Seeking any information on Joel Calvin JENKINS, born circa 1862 in GA. He was the son of Colman JENKINS, born circa 1820 in TN. Colman married four wives: (1) Nancy STEWART, (2) DAVIS ?, (3) WITCHER ? and (4) Sally McCLARD.

Alene Pipkin Kingrey; 2405 Franklin Road; Scottsville, KY 42164

[Ed. Note: A pedigree chart accompanied this query. Surnames on chart are: PIPKIN, EAST, MARSH, PARKER, SHORT, GUM, LEE, LAW, JENKINS, BOSTON, STEWART, HARGIS,

COTHRON, HOWELL, WHOOTEN, SIDDEN, AND BANDY. The chart has been placed in the vertical files in the DPL Genealogy Section in file marked "PIPKIN."

**HOWE
ROBERSON**

Seeking descendants of Hudson M. HOWE and wife Esther of Somerville, MA. Sons: Bernard, Leon, Jack (?), and Fred Leslie HOWE. Fred was born circa 1897 in MA. He was a cameraman for Universal Pictures in 1914; in WW I, CPL F. L. HOWE, Co. BB", 111 of Engineers. Wives of Fred Leslie HOWE between 1914 to 1919 were (1) Alvie, a nurse; (2) Kittie Mae ROBERSON. One son, Fred Leslie HOWE, Jr., born 19 Jan 1917. Fred Howe, Sr. remarried and had at least two sons in the 1920's. In 1935 he was an inspector with Coast Cities Bus Company and lived at 512 Summerfield Avenue in Asbury Parks, NJ.
Betty Ann Howe Seaman; 3022 Encino Drive; Dallas, TX 75228

**SMITH
RECORD**

Seeking descendants of Mertice Virginia SMITH, born 5 Feb 1890, Dallas, TX; married in 1916 in Los Angeles, CA to Grover RECORD. She died 3 Mar 1917 in Los Angeles. One child, Helen Virginia RECORD, was born 22 Feb 1917 in Los Angeles. She is known to have visited in Dallas, TX in mid 1930's and thought to have been a nurse in Los Angeles area.
Norma Frazier; 1720 Jeff Davis; Tyler, TX 75703; 903/561-5178

**RANEY
CAGLE**

Seeking information on Samuel Melvin RANEY, born 14 Mar 1847; joined Confederate Army in Tullahoma, Coffee Co, TN on 13 June 1862; surrendered in MD in 1865; died 15 Mar 1950 in Franklin Co, TX. He married on 22 Oct 1874 to Mahala Jane CAGLE, born 14 Nov 1855 in AL; died 9 July 1936 in Franklin Co, TX.
Becky Good Towb; 3305 Graybar; Garland, TX 75040

**LONG
BERRY**

Seeking information on Nancy M. LONG, born 29 Jan 1835 in TN; died 1 Jun 1914 in Jackson co, TN; said to be a native American lost as a child on the Trail of Tears. Nancy married Gail BERRY, born 30 Mar 1830 in Hawkins Co, TN; died 6 Jun 1915 in Jackson Co, TN.
Becky Good Towb; 3305 Graybar; Garland, TX 75040

**GOOD
SPEARS**

Seeking information on Henry Granville GOOD, died circa 1840 in Rutherford Co, TN. Mother said to be Elizabeth. Henry married Mary Ann SPEARS. She died circa 1837 in Rutherford Co, TN.
Becky Good Towb; 3305 Graybar, Garland, TX 75040

**THOMPSON
RANEY
BOZMAN**

Seeking information on Lula Ollie THOMPSON, born 6 Mar 1887; died 19 Oct 1956 in Franklin Co, TX; married 21 Mar 1905 to James Bennet RANEY, born 12 Aug 1885; died 24 Mar 1950 in Franklin Co, TX. Lula's parents said to be Young Valentine THOMPSON and Martha M. BOZMAN.
Becky Good Towb; 3305 Graybar; Garland, TX 75040

**BRANUM
MILLER
OVERTONS
TEETERS
EVANS**

Seeking information on descendants of Lindsey BRANUM, born 9 Aug 1809; died 25 May 1868; and Margaret (MILLER) BRANUM, born 10 Feb 1825. Children: Rufus, Elijah, Hester, Mary, John, James, George, Walter, Thomas, Malichi, Linsey, and Minta. Lived in Oak Cliff area. Intermarried with the OVERTON, TEETER, AND EVANS families.
Barbara J. Reily-Branum; Box 189; La Luz, NM 88337

**FOWLER
BURDETT**

Seeking information on the family of James S. FOWLER of Newtonia, Newton Co, MO, born circa 1809 in KY; died circa 1855 in Newton Co. Married to Sarah Jerusha BURDETT. *Goodspeed* states that James' father was Richard whose estate was in VA.
John Fowler; 5121 Turnstone; Austin, TX 78744

**EZZELL
KEITHLEY**

Seeking contact with other descendants of Samuel EZZELL and Christina (KEITHLEY) EZZELL, both from Lincoln Co, MO. They moved with family to Lavaca Co, TX, and settled in the area that is now know as Ezzell, TX.
John Fowler; 5121 Turnstone; Austin, TX 78744

**BAUGH
SAMUEL
LAMBERT
LOTSPEICH**

1. Seeking information on William Fred BAUGH and Jolley Ruth SAMUEL who were married in Dallas on 4 Jun 1937. Would like names of children, grandchildren, and birth dates of all.
2. Seeking to contact descendants of Clonnie L. and Juanita Samuel LAMBERT who were in Dallas in 1938.
3. Seeking a date of death for Daisey Jolley Samuel LOTSPEICH. It would have been after 1951. She is the mother of the above mentioned ladies.
Barbara Samuels; 7805 Linda Lane; Anchorage, AK 99518

**WHEELOCK
SLAUTER
KILLOUGH**

Seeking descendants of Col. Eleazar Louis Ripley WHEELOCK (1793-1847) and his wife Mary Prickett WHEELOCK, of the town of Wheelock, Robertson Co, TX. They had four children who lived to be adults: George Ripley Wheelock, married Mary Ann SLAUTER; Annette Woodward (WHEELOCK) KILLOUGH; William Hillman WHEELOCK; David Pickett WHEELOCK. Grand reunion planned.
Mrs. Wm. G. Hutchinson; 10105 Losa Drive; Dallas, TX 75218

19th Century Junk Bond Dealer?

1860 Federal Population Census (Free Schedule) Chickasaw County, Mississippi, page 126/167, dwelling # 974: A. J. Jamieson; age 32; occupation, *Shaver of Notes*; born, South Carolina; Real Estate worth \$700; personal property \$15,000. According to Webster's *Unabridged Dictionary*, a "shaver of notes" is a person who buys notes or bonds at a discounted price much lower than the going rate, then sells them at a much higher rate.

Program Note:

DGS is taking a summer break. There will be no programs or workshops during the summer. The September newsletter will have information about the regular meeting and computer interest group meeting to be held on 23 September. Have a fun, safe summer. Good ancestor hunting!

**Dallas Genealogical Society
P.O. Box 12648, Dallas, Texas 75225-0648**

Address Correction Requested

**Nonprofit Org.
U. S. Postage
PAID
Dallas, Texas
Permit No. 7123**

**Volume 15, Number 6 (Issue 133)
July-August 1991**