

# DGS NEWSLETTER



November/December 1998

Volume 22, Number 10 (Issue 194)



*"Don we now our gay apparel" for the*

## DGS Christmas Party

Service and Writing Awards Ceremony

Monday, 14 December 1998

O'Hara Exhibit Hall, 7<sup>th</sup> Floor

Dallas Public Library

6:30 - 8:45 PM

Light Buffet, Christmas Punch & Cheer

Limited table seating with plenty of perimeter chairs



### INSIDE THIS ISSUE . . .

Christmas Party and Awards Ceremony	177
DGS News & Coming Events	179
Article: Shirley Hawn's Trip to Washington, D.C.	182
Bulletin Board	184
Beginner's Corner: Adventures in Genealogy	186
Writing Family History	188
News from the 8th Floor	189
• Index to Genealogical Publications - Texas	189
• Recent Acquisitions (3,000 Volumes Bound!)	192
Queries	194
Membership Application	195
DGS Calendar of Events	196

## SERVICE AWARDS: *SUBMIT BY 15 NOVEMBER*

The Dallas Genealogical Society annually awards the following to selected recipients.

**Volunteer of the Year:** Member who has given outstanding volunteer service to DGS during the preceding society year.

**Award of Merit:** Individual who has given outstanding contributions of service to DGS over a period of years.

**Lloyd D. Bockstruck**

**Distinguished Service Award:**

Individual who has consistently and significantly contributed to the field of genealogy over a period of years. (May or may not be awarded annually.)

**Preservation Award:** Individual or group whose efforts contribute to the preservation of historical or genealogical items. (May or may not be awarded annually.)

These awards will be presented at the December Christmas Party and Awards Ceremony. Please



submit your input and names for nominees in writing to Shirley Sloat, 9563 Crestedge Dr., Dallas, TX 75238, or by e-mail to [shirleys@aol.com](mailto:shirleys@aol.com).

**Regular Meetings:** Unless otherwise indicated, DGS regular meetings are held on the 4th Monday, Jan. - May, and Sept. - Nov., in the auditorium of the J. Erik Johsson Central Library (Dallas Public Library), 1515 Young Street, in downtown Dallas. Meetings begin at 7:00 p.m. with a reception at 6:30 p.m. in the East/West Room. Regular meetings are free, and visitors/guests are welcome.

**Computer Interest Group**

(DGS/CIG): Unless otherwise noted, the DGS Computer Interest Group meetings are held at 6:30 p.m. on the 2nd Thursday, Jan. - May and Sept. - Nov. in the auditorium of the library. Additionally the DGS/CIG holds a "question & answer" period in the library's auditorium one hour prior to the regular DGS monthly meetings. Meetings are free, and visitors/guests are welcome.

**DGS African-American Interest**

**Group (AAIG):** Unless otherwise indicated, meetings are held in the East/West Rooms of the library on the third Tuesday of each month at 6:30 p.m. Meetings are free, and visitors and guests are welcome.

**Our Home Page Address (URL):**

<http://www.dallasgenealogy.org>

**Our E-Mail Address:**

[dgs@chrysalis.org](mailto:dgs@chrysalis.org)

**Voice Mail Number:** 214.670.7932

**Newsletter**

The *DGS Newsletter* is published monthly from Jan.-May and Aug.-Oct. with bi-monthly issues published in June/July and Nov./Dec. Copy deadline for the Jan. 1999 newsletter is 1 Dec. 1998. All articles and correspondence for the *DGS Newsletter* should be mailed to the society address listed above to the attention of the newsletter editor. Articles appearing in the *DGS Newsletter* may be reprinted only upon receipt of written permission from the author. Credit should be given to the author & acknowledgment given the *DGS Newsletter* as the source. Letters requesting reprint permission should be sent to the newsletter editor. Printed by Arrow Reprographics, Inc., 102 Northlake Shopping Center, E. Northwest Hwy., Dallas, TX 75238 © *Dallas Genealogical Society* [ISSN 1091-3130]



**Dallas Genealogical Society**  
**Post Office Box 12446**  
**Dallas, Texas 75225-0446**



Founded in 1955, the Dallas Genealogical Society (DGS) is the oldest organization of its kind in Texas. It is a nonprofit, tax-exempt corporation and a member of the Federation of Genealogical Societies (FGS).

**Executive Board**

**Officers:**

- Carole Chew Ruska ..... President  
214.324.2928
- Bill Benson ..... Exec. VP, Fundraising  
214.352.0572
- Beverly Johnston Holmes ..... VP, Education & Programs  
972.241.3034
- Vergie L. Freeman ..... VP, Membership  
972.394.1946
- Hallie Price Garner ..... VP/Editor, *The Dallas Journal*  
214.349.3869
- Jill M. Clark ..... VP/Editor, *DGS Newsletter*  
214.330.9006
- Suzan Younger ..... Recording Secretary  
214.381.5156
- Judy Gilreath Johns ..... Treasurer  
972.231.2000

**Directors:**

- Everett & Betty Erikson ..... Sales  
972.242.1837
- Helen J. Wilson ..... Special Interest Groups  
972.475.2895
- Rudy & Jo Ann Stanislav ..... Mailing  
972.223.1386
- Sheila White Huckaby ..... Publications  
972.867.1785
- Kim Carney ..... Publicity  
214.827.4922
- Susan Powdrill ..... Volunteer Coordinator  
972.458.8580

**Appointed by the President:**

- Lloyd Dewitt Bockstruck ..... Library Liaison  
214.670.1433 (wk)
- Barbara Ware ..... Parliamentarian  
972.307.8874
- Judy Gilreath Johns ..... FGS Delegate  
972.231.2000
- Barbara Dossett ..... Database Coordinator  
214.339.7149

**Membership**

Individuals, libraries, or societies may apply for membership. Dues are \$20 for twelve consecutive months, with membership beginning the month of payment. New member dues and renewals should be mailed to: DGS, PO Box 12446, Dallas, TX 75225-0446, and marked "Attn.: VP, Membership." Current members receive the *Dallas Journal* and the *DGS Newsletter*.

The object and goals of this society are:

- Create, foster, and maintain interest in genealogy and family history;
- Raise standards of genealogical research through educational programs, workshops and publication of data;
- Promote the collection and preservation of material relating to the early history of Dallas County and those pioneers who settled the area
- Copy, index, and publish records, documents, inscriptions, and other genealogical source materials;
- Support the Genealogy Section of the Dallas Public Library; and
- Stimulate the exchange of information between society members and genealogical researchers across the nation.

## President's Message

**Carole Chew Ruska**

By the time you receive this issue, DGS will have completed two very successful events. (See reviews in this *Newsletter* about the Fall Conference and the Beginner Workshop.) November is the start of our 1998-99 Lecture Series. If you were not at the September meeting when the budget was presented and approved, it is printed in this issue. It was pointed out in the budget presentation that dues only cover a certain portion of our expenses, and that the source of the annual gift to the library is our fund-raising activities.

Your support of these educational and fund-raising activities, such as the two recent ones, allows the society to publish, bring outstanding genealogical talent to our members and others, and to increase our gift to the genealogy section of the library. If we have not had the topics or speakers you want, let us know. The voice mail number and the e-mail address are listed on the inside front cover of the newsletter. Use them to tell us your opinions, wants, and needs. Check out the Society website, <http://www.dallasgenealogy.org> to keep up with all our activities.

We have planned a very eclectic lecture series for this society year, and it will be presented in a very exciting mode, and location. Hopefully, you have received the brochure and/or read about them in the newsletter. Support these activities; you will be enriched and so will our annual gift.

Watch for brochures in the mail about our other up-coming events and read about them in the *DGS Newsletter*. If you have friends who are not members, but would like to come to our events, give us the name, address, phone, by voice mail or e-mail and say "add to mailing list." We mail to almost 3,000 people, and are always looking for new ones to reach. All activities of the Society are open to the public except for the lock-in, and Salt Lake City trip.

Another event that needs your attention is the annual Service Awards coming in December. Because of my "Sweet William" adventure, the announcement did not get in the October *Newsletter*, but is in here now. Act quickly and you can still submit your choice for these awards, which are explained elsewhere in this issue. Your input is very important, and I apologize for bringing this to

your attention so late, but not *too* late. However, 15 November is the deadline; act quickly!

At the November meeting, the membership will also be presented some by-law changes that the board felt were necessary to comply with the existing operations currently in effect. These will be printed in the January issue and voted on at the January meeting.

Remember: support our educational and fund-raising activities and enrich both yourself and the coffers. See you there!



## Editor's 2p

**Jill M. Clark**

Elections are over, another Veteran's Day has been observed, and Thanksgiving is on the way. I'm grateful for the ancestral finds that I've stumbled upon during the past year, and I hope you have some genealogical progress to be thankful for as well.

With the holiday season just around the corner, family traditions and celebrations come to mind. When challenged with the idea that these traditions are not important or should be put aside for something new and better, think back to your childhood and the people and things that made family gatherings and special occasions stand out in your mind. What favorite meals or unique ways of celebrating these days bring back those fond memories? Was it Grandma's stew or the apron that she always wore in the kitchen? Did Grandpa bounce the young ones on his knee and sing a funny song or rhyme? Were there particular scents or colors that your mother used in decorating the home? Was there a special prayer or ceremony your family recited at Chanukah? This is the stuff that enriches family life and binds us together.

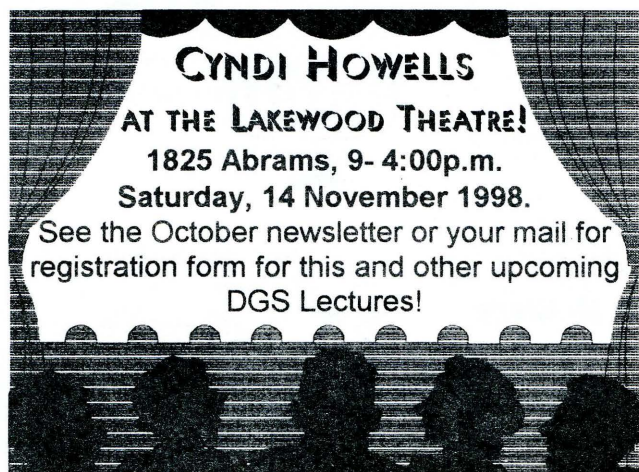
Keep those happy and special traditions alive for the current and next generations. Memories are made when the family gathers for holidays and holy days. You can make a difference. Happy holidays!

## November Meeting Program

Beverly Johnston Holmes

### ***Discovering Documents: A Treasure Map to the Past***

We will begin our second month of searching hidden treasures with Charlotte Bagh and Darlene Brimmage. They work at Dallas Public Library on the sixth floor in Governmental Documents and Maps. Genealogists have been missing many treasures associated with these two resources, but we are about to discover these hidden treasures. Join us in the treasure hunt at the November meeting on Monday the 26th.



## 1998-99 Approved Budget

Presented by the Board at the September meeting and approved by the Membership

Total Projected Income	\$92,145.00
Total Projected Expenses	\$74,329.00
Projected Net Profit	\$17,816.00

## Institute of Genealogical Studies *IGS (formerly GIT)*

### Carole Ruska

The DGS Board has voted to discontinue IGS for 1999, as previously funded, as a result of the loss of \$571.00 made at the 1998 Institute. Following is a brief history of the school so the membership can understand why this decision was made.

In 1992, three members of the Dallas Genealogical Society formed a school called the

Genealogical Institute of Texas and held the first session in July 1993. At the close of the 1995 session, they turned the school over to the Dallas Genealogical Society to be run as a separate entity, but under the auspices of DGS. The school was held in 1996, but it was decided not to have IGS in 1997 because of the FGS Convention that was held here in Dallas. The Institute was never chartered as a separate entity nor did the IGS board meet during the interim; therefore, the school never organized for 1997-98.

In October 1997, the DGS Board voted to make IGS a part of DGS as a fundraising event, and asked Leslie Collier to be the director. The money held over from GIT and the money earned at IGS in 1996 was transferred from the IGS account into the DGS bank account. The Board voted in May 1998, when it appeared that IGS could possibly lose a large amount of money due to small enrollment, to set aside \$10,000 from the budget to cover that loss. The money from GIT and the 1996 IGS had already been included with the gift to the library. The 1998 IGS was held in July and did realize a small loss.

This October, a meeting was held with those having prior or present affiliation with GIT/IGS. After looking at the history of attendance, fees, expenses, and profit/losses, it was recommended not to continue IGS in 1999. The Board approved that recommendation at the October board meeting. The money held from last year's budget to cover IGS will be added to the annual gift in the name of the three original founders, Barbara Roberts Baylis, Madilyn L. Crane, and Mary Reid Warner. This decision was announced at the October business meeting. DGS retains the name and can decide later to re-examine IGS as a DGS event.

## Volunteer News

### Susan Powdrill

Thank you to all the volunteers who give so generously of their time each month, and especially to the desk subs who have helped so faithfully at the library during the busy vacation season.

There are several slots open at the desk. If you can help during one of these times, please call me at 972.458.8580.

Monday 7-9:00 p.m.

Wednesday 7-9:00 p.m.

Thursday 7-9:00 p.m.

Saturday 9-11:00 a.m., 11-1:00 p.m. (6 months)

(\*Editor's note: DGS/Library volunteer awards will be presented at the Christmas party in December.)

Willkommen! Bienvenue! Fàilte! Benvenuto! Recepción! Boa vinda!

## Membership Report

**Vergie L. Freeman**

*Our newest members:*

Brentz and Gene Brooks

Robert and Joy Dunaway

Nancy and Morris Galter

Edward and Patricia Gregory, III

Carolyn and Sam Harris

William D. and Mable Hocutt

Barbara F. Keithly

Sherrie Rowan Leach

William G. Pledger

Temple Pouncey

Gary Roberts

Glen Rutter

Margie H. Shearer

John H. Smallwood

Robbie ter Kuile

Sandi Wavrusa

Mike and Donna Wilson

**DGS membership totals 1101 as of 1 Oct. '98.**

Willkommen! Bienvenue! Fàilte! Benvenuto! Recepción! Boa vinda!

## Successful Beginner's Workshop

**Beverly Johnston Holmes**

The Beginner's Workshop held on Saturday, 3 October 1998, attracted 74 new genealogists. Fifty-six sent in pre-registrations with another twenty-three registering at the door, for a total paid attendance of 79. There were five no-shows.

We think we convinced them how exciting genealogy is as seven people joined the society at the event. The sales directors reported that \$1,128.78 was spent on DGS materials including the revised *Beginner Notebook*.

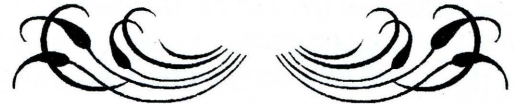
With income of \$1,385.00 (not counting sales) and expenses of \$577.00, DGS realized about \$808.00 for the annual gift fund. Thanks to all who helped make this a success.

## Fall Festival of Genealogy Report

**Barbara Dossett**

The Fall Conference has come and gone and it was a success. 385 people joined the vendors at the new-and-revised Dallas Convention Center for a September get-together. The classes stayed full all day and the vendors were busy. In fact some have asked that we not forget them next year when we're looking for vendors. Not all expenses are processed yet, but preliminary results showed we

made a profit again. The only "down side" was that this convention was not taped. (*Repeat Performances* never responded to our numerous requests.) On a high note, the Fall Festival made such a good impression that several people showed up at the Beginner's Workshop a couple of weeks later because they enjoyed the conference and realized that they wanted even more education. Next year's event is already in the beginning planning stages. If you missed it this year get ready for next. The date is to be set soon so watch this space in future issues of the *DGS Newsletter*.



## Dallas Genealogical Society Makes Plans for Annual Trip to Salt Lake City

Travel to Utah and research the LDS Library with fellow DGS members next spring. Mark your calendars and set aside April 25th - May 2nd 1999 to join us for this annual trip to the FHL. Details can be found in the next issue of this newsletter; in the meantime, contact Carole Ruska by phone; 214.324.2928, or by e-mail; ccruska@aol.com for more information.

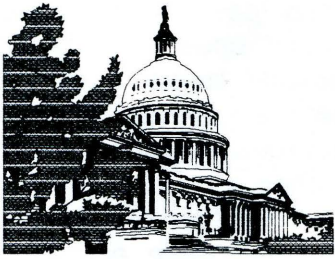
## Salt Lake City Seminar

Saturday, 30 January 1998

Dallas Public Library Auditorium

Learn to research at the Family History Centers locally and the Family History Library of the Church of Latter-Day Saints (LDS) in Salt Lake using the Ancestral File, IGI, and catalog on microfiche and on the computer FamilySearch program. This workshop is open to all who desire to learn how to use these materials. It will especially be of interest to those who are thinking of going on the DGS trip to Salt Lake City in April. Prospective researchers will be well prepared to do serious research once in Salt Lake. Preparatory work is essential before going on a research trip. Brochures will be in the mail and at the Dallas Public Library by the end of November. A package deal will be offered for the seminar and the research trip. Come to one or both, but either way, learn how to prepare and research using the LDS materials.

*(DGS news continued on page 184)*



## A Genealogist's Trip to Washington, DC: More Than Just the National Archives!

**Shirley Hawn**

I'm back! Can you believe I really got to stay in Virginia for *five* months?

It was wonderful. My non-genealogical friends can't believe I didn't *finish* looking for my ancestors in five months. I don't know where the time went! All I know is I need to go back, and the sooner the better. I won't bore you with what I found, I'll just tell you, I *didn't* find George Carter.

I know I said I spent the summer in Virginia, and that's almost the whole truth, but I also managed to spend a month in Washington, DC.

There are a few things I would like to share with you about researching in the *District of Columbia*. However, before we get into the research part, I would like to pass along some information about where I stayed; in a *dorm* at Catholic University. It is only possible during the summer. It is very inexpensive and convenient.

The rooms will accommodate two people with a bath down the hall. The cost is about \$21.00 per night per person, single or double, three night minimum. It costs \$17.00 per week to park your car. Since the *metro* stop was on campus and only two blocks from my dorm, I felt quite safe returning after dark.

There are other universities in the Washington area and in many *other* cities that allow summer campus stays. The policies and requirements are different with each college and you can get travel books that list them.

Union Station is two metro stops from Catholic University. Even if you don't want to catch a train, you can stop there to shop and eat. It has a gigantic food court and movie theater on the lower level and a number of restaurants with table service and many shops on the upper level.

There are three or four shopping malls with restaurants just a short metro ride away, and after sitting in a library all day, walking around a bit is good.

Speaking of the *Metro*, it is so easy to use, inexpensive, and *very* safe. You can buy single or multiple ride tickets and ones that allow unlimited rides. The latter make it very easy, because you don't have to stop for a ticket each time you want to ride.

Now let's talk about *researching* in our nation's capitol. We are all familiar with the **National Archives**, however during this trip I discovered three areas that I didn't know existed. There are separate offices for the *Navy* and *Army Military Departments* and an office that specializes in *District of Columbia Records*. All three have many finding aids and a very knowledgeable staff, who will help you find and order records.

The Naval Office guided me to the chaplain's file of my g-g-grandfather who was a chaplain during the Civil War. It contained information from his personal diary and Bible, copies of letters he wrote to his children, and a poem he wrote his daughter. A research card is required to use these rooms as well as the *Central Research Room*, where requested materials are brought.

*The Reference Library* in the *Central Research Room* is not genealogical. Its emphasis is on the United States and Government Agency History. However, there is much information there. One set of books is titled, *The Revolutionary War*, and is published records and rosters from Alabama, Georgia, Maine, Massachusetts, New Hampshire, New Jersey, New York, Pennsylvania, Texas, and Virginia.

A research card is *not* necessary to use the microfilm collection in the *Microfilm Research Room*. Volunteer genealogists are now available on the fourth floor outside this room to answer questions and guide you to the right records.

When planning a research trip to the National Archives, please remember they only have *federal government* generated records. They do not have county, state, vital, family history, or colonial records.

When you research at the **Library of Congress**, don't forget the *Local History and Genealogy Reading Room*. It has open stacks for browsing and a very large card file. Some of the resources you will find there are *genealogical periodicals*, a *U.S. biographical index*, *periodical indexes*, a large collection of *town and county histories*, and *published genealogies*.

Other reading rooms of genealogical interest are; *Hispanic*, *Microform*, *Manuscript*, *Geography & Map*, *Newspaper* and *Current Periodicals*, and of course the *Main Reading Room*. There are at least a dozen other reading rooms, including *Photographs and Prints* and *European*.

The Library has the largest collection of *City Directories* in the world, and as you know, searching these is a must if you have ancestors who lived in cities.

A *reader identification card* with picture is required when requesting material and for entrance to most reading rooms. If you don't have a card, allow time to fill out the form and have a photo taken when you go there.

Because of budget cuts, the hours have changed for the **Archives and Library of Congress**. Be sure to check them before you go. They are not both open on the same night, but during the week you can research at one or the other until 9:30 PM. See, no wasted time!

**The Daughters of the American Revolution** has a library that houses genealogical materials accumulated by the Society for almost one hundred years. There are three resource areas located in the historic Memorial Continental Hall, the *DAR Library*, *The Office of the Registrar General*, and *The Seimes Microfilm Center*. If you are not a member of the NSDAR, there is a \$5.00 fee per day to use the library.

**The Columbia Historical Society**, on New Hampshire Avenue, which dates back to 1894, is another great place to research if you have ancestors from the Washington area. They have over 12,000 printed materials pertaining to the history and people of Washington, and over 40,000 print, photographic, map, and other visual materials.

If you have any interest in Naval History, the **Navy Historical Center** at the Washington Navy Yard is a must. They have *war diaries*, *biographical files of officers*, and *ship and unit historical files*. Their *photographic section* has over 250,000 images, including every Navy ship from 1800 to 1920 and a collection of post-1920 material not found at the National Archives.

There is also a **Navy Department Library** at the Navy Yard that has over 8,000 reels of microfilm and 170,000 volumes. These include *ships' registers*, *Naval register and directories*, *Officers' papers*, *microfilm of newspapers and periodicals from the American Revolution*, *European Naval records*, and much, much more.

There are so many resources in the area, I don't know where to stop! There is the **Lloyd House** branch of the **Alexandria Public Library**, which has 1,500 books on the Civil War, a thousand genealogies and family histories of the region, (all of Virginia) and newspapers of Fairfax County and Alexandria from 1784.

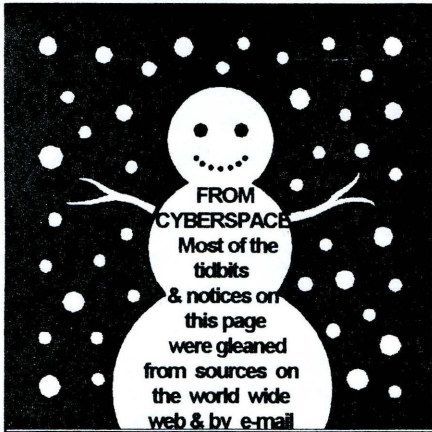
The **National Genealogical Society Library** in Arlington, VA., has a wonderful library. As a member you can use their book loan service, and their catalog is now on-line.

Okay, okay, I'm going to stop! First I want to tell you that **all** the above facilities are accessible by the *Metro*. This article isn't meant to tell you *all* about these facilities or *about* all the facilities in the District of Columbia; an all day lecture couldn't do that. What it *is* meant to do, is remind you of some of the wonderful resources available.

There are many books written about how to research there. The following are some I have in my library that I have found to be helpful.

- \* ***The Center: A Guide to Genealogical Research in the National Capital Area***, by Christina K. Schaefer
- \* ***Research in the District of Columbia*** by Erma Miller Angevine
- \* ***The Union: A Guide to Federal Archives Relating to the Civil War***, by Kenneth W. Munden and Henry Putney Beers
- \* ***The Confederacy: A Guide to the Archives of the Government of the Confederate States of America***, by Henry Putney Beers
- \* ***The Archives: A Guide to the National Archives Field Branches***, by Loretto Dennis Szucs & Sandra Hargreaves Luebking
- \* ***Military Service Records*** – A Select Catalog of National Archives Microfilm Publications - published by National Archives Trust Fund Board
- \* ***The National Archives: Microfilm Resources for Research*** – A Comprehensive Catalog – published by National Archives & Records Administration
- \* ***Lest We Forget*** – A Guide To Genealogical Research in The Nation's Capital – published by the Annandale State of the Church of Jesus Christ of Latter-Day Saints
- \* ***The Library of Congress*** – A Guide to Genealogical and Historical Research, by James C. Neagles
- \* ***Genealogical Research in the National Archives*** – published by National Archives Trust Fund Board
- \* ***District of Columbia Ancestors*** by Wesley E. Pippenger
- \* ***Immigrant and Passenger Arrivals*** : A Select Catalog of National Archives Microfilm Publications, by National Archives Trust Fund Board
- \* ***Catalogue of Revolutionary War Pension & Bounty Land Warrant Application Files*** – American Rev. War Service Records and General Index – Publication M804

# The BULLETIN BOARD



\* Texas Tech student Caleb Johnson set up a **Mayflower Website** and learned through research that he is descended from seven Mayflower pilgrims. He warns that "genealogy is for those who want to learn

about their ancestors. It's not for those who want to put their ancestors on pedestals." Johnson found some interesting characters in his family tree, including a pig thief, an adulterer, a polygamist, and a murderer who was hanged. Here is where you can find Caleb's project homepage: <http://members.aol.com/calebj/mayflower.html> (*Reunions Magazine, Autumn 1998*)

\* Did you celebrate your "pre-historic ancestors?" October was **Archeology Awareness Month** in the state of Texas. To see what you missed visit <http://www.utexas.edu/research/tari/>

\* **Interesting African American Genealogy Sites:** Christine's Genealogy Website -- <http://ccharity.com> Slavery in Dauphin county, Pennsylvania <http://www.geocities.com/Athens/Parthenon/6329/frame.html>

\* Get updates on the status of the **Regional Archives** in Ft. Worth, as well as other locations, by going to <http://www.nara.gov/nara/spceplan.html> (As found in *Roots 'N Branches*, the Grand Prairie Genealogical Society Newsletter)

\* **St. Mary's Parish, Haddington, East Lothian** (Church of Scotland) now has an online list of those buried in its kirkyard. Point your web browser to [http://ourworld.compuserve.com/homepages/Russell\\_Darling/Grave.htm](http://ourworld.compuserve.com/homepages/Russell_Darling/Grave.htm)

\* America Online's Genealogy Forum is happy to announce the opening of its **Portuguese Resource Center** for Genealogy. Access keyword: ROOTS.

\* <http://www.tsl.state.tx.us/looby/rc> is the URL for the **Republic of Texas** Claims Preservation Project.

\* **Recent Genealogy-Related Additions** to the Internet include the following:  
The United States Newspaper Program <http://www.neh.fed.us/html/usnp.html>

The Obituary Network -- <http://www.obits.com>  
BUBL Link:929 Genealogy, Names, Insignia (UK) <http://link.bubl.ac.uk/genealogy/>  
Capturing the Past: How to Prepare and Conduct an Oral History Interview <http://www.kbyu.org/capturingpast/>  
The Kinman: Genealogy in Scotland <http://www.web-ecosse.com/genes/genes.htm>  
Puerto Rican Hispanic Genealogical Society <http://www.rootsweb.com/~prhgs/>  
New Netherland Project -- <http://www.nnp.org>

(continued from pg. 181)

## Holiday Gift Ideas



Just in time for Christmas, DGS Sales is offering the brand new **Beginner Notebook** for that beginning genealogist friend or relative. Informative articles were gleaned from past *DGS Newsletters* and forms that every genealogist needs are organized in this notebook by topics. You will readily refer to this handy resource time after time. Included is Desmond Walls Allen's *Beginner's Guide to Family History Research*, a must for beginners and disorganized genealogists everywhere!

Along with the notebook, DGS is offering a variety of sturdy **tote bags** to carry on your research trips, complete with the DGS logo. Watch for these items at the DGS Sales table at the October and November meetings as well as at DGS events. These items will be listed in the Sales Notebook at the Volunteer Desk, but because of space limitations, they will only be sold by mail order, at DGS events, or at the Sales table at the October and November meetings.

Don't miss out on these great gift ideas for Christmas and other occasions! Come to the DGS meetings and events for these sale items.

## DGS Library Lock-In Date Announced

Ever had the desire to stay up all night and look at microfiche until the wee hours? Wish you could "have at" the genealogy resources on the 8th floor with no one to tell you your turn is up? Well, your wish will be granted the 20th of March as DGS puts on another lock-in at the downtown library. This one is for members-only, space limited for sixty, and it's a fundraiser: \$20 per person. Sign-up information for this event will be in the January newsletter.



✧ **Estimated Mayflower Descendants: 35 Million**

It's been 378 years since the 41 Pilgrims aboard the Mayflower signed a compact in 1620 to form "a civil body politick for our better ordering and preservation." Their estimated progeny are scattered around the country and the world. According to Richard Maxwell, governor general of the 24,000 member General Society of Mayflower Descendants, it is not unusual to have multiple Mayflower ancestors because they were a very small community at first. (*Scripps Howard News Service*)

✧ You've heard of the DAR (Daughters of the American Revolution), but did you know there is a **National Society of the Sons and Daughters of the Pilgrims**? The main purpose of this organization is to identify lineal descendants of persons who settled pre-1700 colonies in America. Write Arthur Louis Finnell, 3917 Heritage Hills Dr., #104, Bloomington, MN 55437-2633.

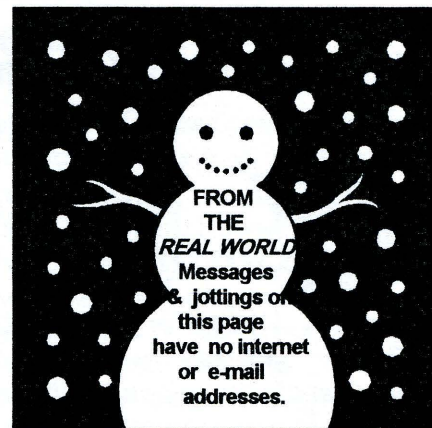
✧ Another group concerned with early Americans is the **Society of the Descendants of Washington's Army at Valley Forge**. If you have an ancestor who was an soldier or officer during the 1777-1778 winter encampment at Valley Forge, write to Deputy Commissary General, P.O. Box 915, Valley Forge, PA 19482-0915.

✧ **Reunions Magazine** is looking for a cover photo for their Summer 1999 issue. They will pay you \$100.00 if your photograph is chosen. See the fall issue of the magazine for qualification guidelines or write *Reunions Magazine*, P.O. Box 11727, Milwaukee, WI 53211-0727.

✧ **Salado** is the site of the 37th Annual **Gathering of the Clans** in Central Texas. If you have Scottish heritage (and even if you don't) you won't want to miss this, the oldest Scottish festival in Texas. Hosted by the Central Texas Area Museum Association and located near the famous Stagecoach Inn, this three-day event takes place the second week-end in November. For more information call (254) 947-5232.

✧ "Be not afraid of life. Believe that life is worth living, and your belief will help create the fact." *William James*

✧ Here's an idea for a fun and educational project to do with your children or grandchildren during Christmas vacation. Create a personal or family timeline by taking a piece of butcher paper and cutting a long strip -- about a



foot tall, and three to six feet long (depending upon the age of the child and the length of your hallway). Divide the paper in half, lengthwise. On the top half have the child write down historical events during the time period chosen. These can be found in old newspapers, in library archives, and on the internet. (For a personal timeline -- begin with the birth year of the child.) Below record personal events, i.e. birth, baptism, first steps, first word, first day of school, first tooth lost, etc. These can be found in baby books, calendars, family photos, etc. The child can decorate with drawings, pictures, and whatever he or she likes, to personalize the timeline. Display the finished project with pride in the hallway or room of your choice.

**From the DGS Newsletter Archives --**

A blast from the past! Remember when the 1920 Census was not yet available for viewing by the public? Here's an excerpt from the *DGS Newsletter*, Volume 16, Number 3, **March 1992**

"On 2 March 1992 the National Archives and Records Administration officially opened to the public the microfilmed copies of the 1920 federal census and Soundex. Consisting of 2,076 rolls of population schedules and 8,585 rolls of Soundex . . .

". . . the format and information in the 1920 census schedules are similar to the 1910 census, with a few differences . . .

"Omitted were questions concerning number of years married for married persons, number of children born to the mother, and number of children living at the time of the census. Also, omitted were questions concerning unemployment, the blind, deaf and dumb, the survivors of the Union and Confederate army or navy . . .

". . . The 1920 census and Soundex ordered by DGS for the Genealogy Section will not be available until early summer. We will keep you updated on its arrival date."

# BEGINNER'S CORNER

## Adventures In Genealogy

### OR "A Redneck's Day at the Dallas Genealogical Conference"

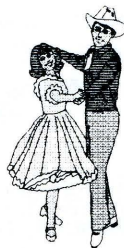


**William D. Hocutt, aka GFS Waffle**

*This month it's time for a little humor! Writing in journal format, Bill Hocutt of Greenville, Texas reviews his day at the recent Fall Festival of Genealogy Conference and shares it with us. He is a new member of the DGS and he's also a volunteer in America Online's Golden Gates genealogy forum. The following explanations are in order for the "uninitiated:" LOL = laughing out loud, GFS = genealogy forum staff, WFT = World Family Tree. The Family "Treehouse" is an online chatroom in AOL's genealogy forum. Following Bill's humorous adventure is an example of his more serious side; a well-written portion of his Hocutt family history. (Note that he cites his sources at the end!)*

**6 AM:** The alarm goes off. It's Saturday -- why am I doing this? Forget it; I'm staying in bed!

**6:10 AM:** The alarm goes off again. I hear a sweet voice say "Get out of bed! If that alarm goes off again you are dead!" Reluctantly I get up, turn off the alarm and proceed to get ready. Grab my clothes, turn on the computer, and log on. Gotta check my mail and say "hi" to the other AM lunatics in the "Treehouse." Trade jokes and insults, chain smoke, and drink my morning caffeine.



**6:40 AM:** I am finally awake enough to drive. Kiss the blonde, grab my briefcase, and head for Dallas. Jack up the stereo, sing along with Garth, Willy, and Merle all the way to Dallas. Since the traffic is almost nonexistent I get to Dallas by 7:30. Jump off highway at the Waffle House. (Man it's gonna be a great day!)



**8:15 AM:** Arrive at the Dallas Convention Center, go in and register, carefully placing my name tag over the syrup stain on my shirt. Start looking for GFS Loni and GFS Jill while checking out the vendors. Wow! They've got books here with marriage indexes, will abstracts, land deeds and census indexes. There are folks selling genealogy programs, blank forms, photo albums and WFT CD's.

**9 AM:** No sign of Jill or Loni, so I head for the first lecture. It's on publishing a book on your family; the speaker is Don Rainey. The lecture is fantastic! Mr. Rainey lays down a step-by-step approach (with ballpark figures on costs) to publishing and marketing your family book. He even gives advice on building a marketing group and how many books you have to sell to break even. Then he gives us a quick down-and-dirty way to publish a book for almost no money.

**During the break** (after a quick smoke) I again start looking for the elusive Jill and Loni. Wander the halls, drink a coke, go outside for another smoke. Still no sign of the *Bobsey twins* but its time for the 2nd lecture.

**10:45 AM:** 2nd Lecture is on "Getting Your Files Organized." Very good speaker (forgot to write her name down). She gives us some wonderful ideals but I can't help wondering if a redneck can "be" organized. Well, it's worth a shot! I mean after all, I got my NASCAR memorabilia organized, how hard can it be to get my dead folks in a row?



**Lunch Break:** (run outside for a smoke.) I systematically search the place, looking for the *Dynamic Duo*; after 20 minutes I give up and buy some lunch. I go outside and sit under the trees to

eat. (I don't know it but sitting 30 feet away from me on a bench eating their lunches are the missing hosts.) After eating, I once more go looking for Jill and Loni. I spot a couple of young attractive ladies sittin' on a bench, eating, but figure "nope, I am looking for two little old ladies."

**1 PM:** Time for the 3rd lecture -- Don't ask me what it was about; forgot already. Slowly fading into that full-tummy-need-nap mode. So sleepy didn't even take notes. Boy, would the Boss (GFS Carol) be mad at me if she knew. (LOL)

**Last Break:** Scour the halls "here Loni, here Jilli!" Wander all over the place; still have not seen a single person named Jill or Loni. Beginning to think that either they are figments of my imagination or they are avoiding me. Oh well, on to the last lecture!



**2:45 PM:** Another get-organized lecture. I really wanna get organized (LOL) This one is on organizing your mind before going to do your research. Lots of great suggestions! I am even gonna try a few of them.

**Lecture over,** I wander over to the vendor area to buy some of the forms that they suggested in the last lecture. While I am paying for them, one of the ladies I saw eating lunch walks up to me, smiling. It's Jill! They have been looking for me all day. Finally get to meet them both (Boy, was my mental picture of them way off!)

Overall a great day. Learned lots of new tips and research methods. Bought three new books and got to put faces with the names!



It's important to follow good grammar and spelling rules when writing your family history. Words such as principal and principle; stationary and stationery; capital and capitol are often confused. Memorize little helpful tips like: a principal can be your pal . . . that's how you know that particular spelling pertains to the person, rather than the "principle of the thing."

## The Hocutt Family of Tuscaloosa County, Alabama

### William D. Hocutt

Edward Hocutt traveled to Tuscaloosa County from Johnston County, NC sometime before 10 November 1823. Among the members of his "Wagon Train" were his sons George, Osborn, Richard, Robert and William and at least one of his Daughters, Zilla Hocutt. Also in this party, I believe, was the family of Othniel Traweck.

Some of the early records of the Hocutt family in Tuscaloosa include a land deed dated 10 Oct. 1821, and marriage certificates for the following: Edward Hocutt to Abigail Canterbury, 10 Nov. 1823; Richard Hocutt married Jane McFail, 18 Aug. 1824; Osborn Hocutt to Mary Traweck, (daughter of Othniel Traweck) 21 Aug. 1826; Zilla Hocutt to John Holt, 23 Nov. 1826; William Hocutt to Adeline Traywick, 6 Dec. 1826; George Hocutt to Nancy Lyons, 6 Aug. 1827; and Robert Hocutt to Anna Briant 6 Apr. 1834.

The Hocutt family, although centered in Tuscaloosa County, spread throughout the state. They helped found churches (like Liberty Hill Baptist Church) and served in various public offices from sheriff to justice of the peace.

When the Civil War came to Alabama they proudly marched off to defend their state. From Tuscaloosa County alone, not less than ten Hocutt's donned the Confederate Gray. Among them were George and Osburn Hocutt, sons of Edward Hocutt, and six of George Hocutt's sons. Lorenzo Hocutt and Manasses Hocutt both laid down their lives on the battlefield.

The descendants of this family have gone on to become doctors, lawyers, funeral directors, and common citizens. They have founded large and small companies, built roads and buried the heroes of the state. They have graduated from the University of Alabama, Auburn and Livingston. They sailed the Pacific Ocean and stormed the beaches of Normandy during World War II, and one of their own is inscribed in the sacred marble of the Vietnam Wall. They continue to serve their state and nation to this day.

Sources: (1) Old Tuscaloosa Land Office Records and Military Warrants 1821-1855 by Marily Barefield Page 5. (2) Tuscaloosa County Courthouse Marriage Records (3) The Hocutts of Alabama by Paul Hocutt (3) 1830 Tuscaloosa County Census (4) Register of Amnesty Oaths taken 1865 (5) Pioneers of Tuscaloosa County Alabama Prior to 1830. (6) Alabama Records V50 Tuscaloosa County "Bethel Baptist Church Records, Organized 1818."



## On Writing Family History

### Before You Begin: Some Questions & Comments To Consider

Loni Dollahite

Most things when done well are the result of careful planning. Writing a family history is no different. Before you begin yours here is a list of key points to consider.

#### **Who is my target audience? To whom am I writing?**

\* Consider whether this book is for you, your immediate family, for a particular surname group in the U.S., or the world, or maybe just one branch of the family

#### **Do I want to trace one surname completely? Or several connected families? Or all my family lines?**

\* Tracing one surname fully will mean researching all branches or one branch of the family from a particular ancestor to the present or the period you choose. It will probably include all the descendants of that surname and their progeny as well.

\* If your choice is to do several connected lines, you will most likely put limitations on how many descendants to include.

\* A book dedicated to all related surnames will be the most limited in what is included in the way of descendants. Remember to take into account the finished size of your book, and not make it too large to be easily used. You may want to limit yourself to ancestral lines and their stories, but include family group records for each ancestor so that their family members are included.

#### **What is the time frame I am interested in?**

\* Think about whether you wish to take a surname(s) from the earliest known Old World ancestor to the present; or concentrate on only the old country family; or the family from their immigration to the U.S. until the present; or perhaps even a certain time period, i.e. from 1800 to 1920.

*(to be continued next issue)*

## **RULES FOR BETTER WRITING. . .NOT!**

1. Verbs HAS to agree with their subjects.
2. Prepositions are not words to end sentences with.
3. And don't start a sentence with a conjunction.
4. It is wrong to ever split an infinitive.
5. Avoid clichés like the plague. (They're old hat)
6. Also, always avoid annoying alliteration.
7. Be more or less specific.
8. Parenthetical remarks (however relevant) are (usually) unnecessary.
9. Also too, never, ever use repetitive redundancies.
10. No sentence fragments.
11. Contractions aren't necessary and shouldn't be used.
12. Foreign words and phrases are not apropos.
13. Do not be redundant; do not use more words than necessary; it's highly superfluous.
14. One should NEVER generalize.
15. Comparisons are as bad as clichés.
16. Don't use no double negatives.
17. Eschew ampersands & abbreviations, etc.
18. One-word sentences? Eliminate.
19. Analogies in writing are like feathers on a snake.
20. The passive voice is to be ignored.
21. Eliminate commas, that are, not necessary. Parenthetical words however should be enclosed in commas.
22. Never use a big word when a diminutive one would suffice.
23. Kill all exclamation points!!!
24. Use words correctly, irregardless of how others use them.
25. Understatement is always the absolute best way to put forth earth-shaking ideas.
26. Use the apostrophe in it's proper place and omit it when its not needed.
27. Eliminate quotations. As Ralph Waldo Emerson said, "I hate quotations. Tell me what you know."
28. If you've heard it once, you've heard it a thousand times: Resist hyperbole; not one writer in a million can use it correctly.
29. Puns are for children, not groan readers.
30. Go around the barn at high noon to avoid colloquialisms.
31. Even IF a mixed metaphor sings, it should be derailed.
32. Who needs rhetorical questions?
33. Exaggeration is a billion times worse than understatement.

*-Anonymous*

# INDEX TO GENEALOGICAL PERIODICALS at the Dallas Public Library

## TEXAS

CALL NUMBER	TITLE	HOLDINGS	PUBLISHER
929.10976 A936	Austin Genealogical Society Quarterly (TXAU)	v. 1 (1960) - present; index 1971-87	Austin Genealogical Society
929.3764 B816	Branches and Acorns (TXBA)	v. 1 (1985) - v. 7 (1992)	Southwest Texas Genealogical Soc
929.37642 B827	Brazos Genealogist (TXBZ) (cont. from Genealogist Advertiser v. 1-11)	v. 1 (1979) - present	Brazos (County) Genealogical Soci
929.10976 B936B	Bulletin - East Texas (TXEB) (came with E. T. Family Records)	v. 1(1977) - v. 4 (1980)	Smith, Gregg, Rusk, Henderson, P. Anderson Counties
929.3764 B936B	Bulletin - Ft. Belknap (no code)	v. 3-5 (1964-67) only	Ft. Belknap Genealogical Society
929.37645 B936	Bulletin - Grayson Co (not in PERSI)	v. 2 (1982-83) only	Grayson County Genealogical Soci
929.1072 B936B	Bulletin - Houston, Texas (TXGF) (comes with Genealogical Record))	current only	Houston Gen. Forum
929.106 B936B	Bulletin - Panhandle and Amarillo (not in PERSI)	v. 1-3 (1959-61) only	Panhandle Genealogical Society
929.37641 C343	Cass County Connections (TXCC) (cont. from Cass Co. Gen. Quart.)	v. 1 (1974) - v. 6 (1979); also current	Cass County Genealogical Society
929.37642 C542	Chisholm Trail (TXCH)	v. 1 (1982) - present	Williamson County Gen. Soc.
976.4225 C557	Chronicles - Smith County Texas (TXSM)	v. 1 (1962) - present	Smith County Hist. Soc.
929.37645 C699	Collin Chronicles (TXCR)	v. 1 (1981) - v. 8 (1987); v. 14 (1993) - present	Collin County Genealogical Society
not yet cataloged	Conquistador, El (TXEP)	current only	El Paso County Hist. Soc.
929.3764 C822	Coronado Heritage	v. 1-2 (1960-61) only	Pampa Gen. & Hist. Soc.
929.37645 C833	Coryell Kin (TXCK)	v. 2-3 (1983-84) - v. 4-5 (1986-87) only	Coryell County Genealogical Socie
not yet cataloged	County Chronicle (TXCL)	current only	Dallas County Hist. Commission
929.10976 C996	Cypress Basin Quarterly (TXCY)	v. 1 (1979) - v. 6 (1984)	Cypress Basin (Mt. Pleasant) Gen.
not yet cataloged	Dallas County Pioneer	current only	Dallas County Pioneer Assoc.
929.10973 L811L	Dallas Journal (TXDQ) (cont. from Local Hist. and Gen. Soc. 1955-81; Dallas Quarterly 1982-94)	v. 1 (1955) - present	Dallas Genealogical Society
not yet cataloged	DCGS Newsletter (TXDN)	current only	Denton Co. Genealogical Society
929.37642 D111	DGS Newsletter	v. 12-13 (1988-89) - present	Dallas Genealogical Society
929.37641 E13	East Texas Families (TXET)	current only	Partin Publications
929.3764 E13	East Texas Family Records (TXFR)	v. 1 (1977) - present	East Texas Genealogical Society
976.4105 E13	East Texas Hist. Journal (TXEA)	v. 1 (1963) - v. 12 (1974); v. 19 (1981) - v. 20 (1982); index; v. 26 (1988); v. 28 (1990)	Stephen F. Austin College
976.428 P483E	Elm Fork Echoes (TXEF)	v. 1 (1973) - present	Peters Colony Hist. Soc.
929.3764 F198	Family Tree	see HEART OF TEXAS below	Central Texas Genealogical Societ
929.37645 F494	Finders Keepers (TXFK)	v. 3-4 (1986); v. 12 (1995) - present	Johnson County Genealogical Soci
929.10976 F689	Footprints (TXFP)	v.1 (1958) - present	Fort Worth Genealogical Society
976.4005 F935	Frontier Times (TXFR)	v. 16 (1938) - V. 23 (1945); v. 19, 20, 22 missing	Bandera, TX
929.1072 G233	Garland Journal & Newsletter (TXGQ) (PERSI has Garland Quar. as title; v. 1 (1989)	v. 1 (1991)	Garland Genealogical Society

976.428 G233	Garland Local History (cont. as Garland Quarterly)	v. 1 (1972); v. 2 (1973); v. 1, 2, 4 (1972-76) in one book	Garland Local Hist. & Genealogical
929.10976 G259	Gateway (not in PERSI)	v. 1 (1982) - v. 6 (1990)	Bell County Hist. Soc.
929.37641 G326	Genealogical Record (TXGR)	v. 1 (1959) - present; v. 3,4,5 missing	Houston Gen. Forum
929.3764 G326G	Genealogical Tips (TXTP)	v. 1 (1963) - v. 15 (1977)	Tip O' Texas (Harlingen) Gen. Soci
929.376 G331	Geni (GENI) shelved in LA	see LOUISIANA	Ark-La-Tx Gen. Assoc.
976.4004 N558N	German-Texas Journal (TXGT)	v. 2 (1980); v. 5 (1983) - present	German- Texas Heritage Society
929.37648 H425Q	Hays County Quarterly (TXHY)	v. 2 (1968) - v. 12 (1978)	ceased in 1978; Hays County
929.3764 F198	Heart of Texas Records (TXHR) (bound as Central Texas Genealogical Society Quarterly - see holdings)	v. 1 (1958) - v. 23 (1980); v. 24 (1981) - v. 30 (1987) Heart of Texas Quarterly; also current	Central Texas Genealogical Societ
929.37641 H531	Herald (TXMC)	v. 1 (1978) - present	Montgomery County Gen. & Hist. S
929.3764 H548	Heritage Trails (not in PERSI)	v. 8 (1990) only	Rockwall County Genealogical Soc
929.3764 H648	Hill Country Gen. Quarterly (TXHC)	v. 2 (1975) - v. 3 (1976) only	Hill Country Genealogical Society
929.37645 H776	Hood County Genealogical Society (TXHD)	current only	Hood County Genealogical Society
929.37642 H793	Hopkins County Heritage (TXHH)	v. 2 (1984) - present	Hopkins County Genealogical Soci
929.37642 K21	Kaufman Kounty Konnections (TXKF)	v. 2 (1983) - present	Kaufman County Genealogical Soc
929.10973 E68K	Kissin' Kuzzins, Query Column (not in PERSI)	v. 10-11 (1979-81) only	Daily Sentinel (Nacogdoches), Dail (Henderson), Cherokeean (Rusk)
929.37642 N874	Lamar County (TXNE) (cont. from Northeast Texas Genealogy and History)	v. 1 (1991) - present	Lamar County Genealogical Societ
976.42805 L496	Legacies	current only	Dallas County Heritage Soc. & Hist
929.37642 L579	Leon Hunters Dispatch (TXLH)	v. 13 (1991); v. 16 (1994) - present	Leon County Genealogical Society
929.3764 L785	Living Tree News (TXVR)	v. 1 (1974) - present	Harris County Genealogical Societ
929.37642 M582	Mesquite Tree (TXMQ)	v. 1 (1965) - present	Mesquite Hist. & Genealogical Soc
929.3087 N246	Nase Dejiny (CZND)	V. 2 (1983) - V. 8 (1989)	ceased in 1989
976.4282 N322	Navarro County Scroll (not in PERSI)	1963, 1965, 1968, 1976, 1978, 1979, 1980	Navarro County Hist. Soc.
929.37642 N322	Navarro Leaves and Branches (TXLB)	v. 1 (1978) - present	Navarro County Genealogical Soci
976.4197 N532	New Bostonian (TXNB)	1991 - present	New Boston (Bowie Co) Gene. Soc
929.3764 N867	North Texas Pioneer (no code)	v. 1 (1966) - v. 8.(1973)	ceased in 1973; Wichita Falls
929.3764 N867	North Texas Trail Tracers (TXTT)	v. 1 (1985) - present	North Texas Gen. Assoc. - Wichita
929.3764 N874	Northeast Texas Newsletter cont. as Quarterly (NTXQ)	v. 1 (1970); v. 2 (1971); v. 6 (1975); v. 13 (1982) - v. 17 (1986)	ceased in 1986; Mineola
929.37641 O11O	Oak Leaves (TXOL)	v. 2 (1982) - present	Matagorda County Genealogical Sr
929.10976 O93	Our Heritage (TXRH)	v. 1 (1959) - present	San Antonio Gen. & Hist. Soc.
929.37642 O93	Our Heritage (TXVZ)	v. 1 (1980) - present	Van Zandt County Genealogical Sc
976.4 P191	Panhandle-Plains Review (TXPP)	v. 37 (1964) - v. 40 (1967)	Panhandle-Plains Hist. Soc.
not yet cataloged	Piney Woods Newsletter	current only	Joyce Wicks, ed.
929.3764 P734	Plum Creek Almanac (TXPC)	v. 1 (1983) - present	Gen. & Hist. Soc., Caldwell County
not yet cataloged	Rear View Notes (TXRV)	current only	Camp County Genealogical Societ
929.3764 R311	Records of East Texas (TXRE)	v. 1 (1966) - v. 7 (1973)	ceased; Lufkin
929.3764 R337	Reflections (TXCB)	v. 1 (1966) - v.9 (1974); v. 18 (1982) - present	Coastal Bend Gene. Society-Corpu
929.3764 R332	Reflector (TXRF)	v. 1 (1959) - v. 34 (1992); some missing	Amarillo Genealogical Society
not yet cataloged	Researcher	current only	Friends of National Archives-SW R

929.3764 R628 not yet cataloged	Roadrunner (TXRR) Rockwall County Genealogical Society (see also Heritage Trails)	v. 1 (1974) - v. 14 (1987) current only	Chaparral (Tomball) Gene. Society Rockwall County Genealogical Soc
not yet cataloged	Root Seekers Newsletter (not in PERSI)	current only	Tri-County (Henderson-Kaufman-V Zandt)
929.10899 C537R	Rootsearching - Black Genealogy Column (not in PERSI)	v. 1 (1977-78) only	Marietta Childs, West Texas Times (Lubbock), Como Monitor (Ft. Wort Rusk County Genealogical Society Ellis County Genealogical Society Somervell Co. Gen. & Heritage So South Plains (Lubbock) Gene. Soci ceased in 1984; South Texas Gen/ Soc.
929.37641 R956	Rusk County Echoes (not in PERSI)	v. 1 (1981) - v. 5 (1985)	
929.37642 S439	Searchers and Researchers (TXEL)	v. 1 (1978) - v. 16 (1993); v. 12 missing	
99.3764521	Somervell Settlers (not in PERSI)	current only	
929.10973 S726	South Plains Bulletin (TXSP)	no. 1 (1961) - no. 23 (1973)	
929.3764 Q1	South Texas Quarterly (TXYY) (cont. as Yesterdays v. 15)	v. 1 (1966) - v.4 (1969); v. 14 (1980); v. 15 (1980) - v. 19 (1984)	South Plains (Lubbock) Gene. Soci ceased in 1984; South Texas Gen/ Soc.
976.4005 S727	Southern Hist. Research Magazine (AMSG)	v. 1 (1936) - v. 2 (1937)	ceased in 1937; published in Dallas Southwestern Gen. Library, El Pas ceased in 1978
929.10973 S728	Southwestern Genealogist (SWGN)	v. 3 (1965) - v. 14 (1975)	
976.4005 S726	Southwestern Hist. Quarterly (SWHQ)	v. 1 (1897) - v. 90 (1989)	Texas State Hist. Soc.
929.3764 S782	Stalkin' Kin (TXAG)	v. 2 (1974) - v. 12 (1985); v. 10-11 missing	San Angelo Gen. & Hist. Soc.
929.1 S861	Stirpes (TXSR)	v. 1 (1961) - present	Texas State Genealogical Society
929.10973 T143	Tale of Mid-Cities (TXTM)	v. 1 (1979) - present	Mid-Cities (between Ft.Worth & Da Genealogical Society
929.376 T355	Texarkana U.S.A. Quarterly (TXAR) (shelved in AR)	see ARKANSAS	Texarkana (TX, AR, LA, OK) Gene
929.37642 T355	Texas A. G. O. (TXAT)	v. 3 (1983) - present	Athens Gen. Organization
not yet cataloged	Texas Compatriot	current only	Texas Soc. Sons of the American F ceased in 1978; Ft. Worth
929.3764 T355	Texas Heritage (TXHE)	v. 1 (1975) - V. 3 (1978)	Texas Council for the Humanities ceased in 1988; Balch Springs
not yet cataloged	Texas Journal	current only	Sons of the Republic of Texas
929.37642 T355	Texas Kin (TXTK) (cont. as Dallas County East v. 16)	v. 1 (1972) - v. 4 (1975); v. 16 (1987)	Midland Genealogical Society
369.14 T355	Texian	current only	Lamesa, Dawson Co. Area Gen. S ceased in 1993; Forney
929.10973 T515	Thorny Trail (TXTH)	v. 2 (1974) - present	Anderson County Genealogical So
929.10976 L228B	Threads of Life (TXTL)	nos. 1-16 (1972-80)	Parker County Genealogical Sociel
929.37642 T583	Timekeeper (TXTI)	v. 1 (1982) - v. 11 (1992); v.5 & 8 missing	Cherokee County Genealogical So
929.37642 T759T	Tracings (TXTR)	v. 1 (1982) - v. 6 (1988)	
929.37645 T767	Trails West (TXTW)	v. 1 (1970) - present	
929.37641 T786T	Tree Talk (TXTE)	v. 3-6 (1980-84); v. 8-10 (1985-87); v. 15 (1989) - present	Permian Basin Genealogical Socie
929.10976 T786	Treeshaker (TXTS)	v. 1 (1963) - v. 5 (1967); v. 9-10 (1971-72); v. 22 (1984) - present	
929.3764 V645	Victoria: Crossroads of South Texas (TXVC)	v. 2 (1981) - v. 8 (1987); v. 16 (1995) - present	Victoria Co. Genealogical Society ( surrounding counties)
929.37649 W257	Ward County Heritage (TXWC)	current only	Ward County Genealogical Society ceased in 1977; Abilene Gen. Soci
929.3764 G326G	West Texas Genealogical Bulletin (WTXB)	v. 1 (1959) - v. 15 (1973)	Wood County Genealogical Societ
929.76422 N558N	Wood County Newsletter (TXWD) (PERSI has no. 18 - present)	no. 1 (1986) - no. 16 (1989)	
929.1 Y43	Yellowed Pages (TXYP)	v. 1 (1971) - present	Southeast Texas Gen. & Hist. Soci
929.37641 Y47	Yesterdays (TXYD)	v. 1 (1981) - present	Nacogdoches Genealogical Society
929.1 V394Y	Your Texas Ancestors (gene. column; not in PERSI)	v. 1 (1969) - v. 3 (1971)	Damon Veach, Ft. Worth Star Tele

## NEWS FROM THE 8th FLOOR

### New at the Dallas Public Library by Lloyd DeWitt Bockstruck

The following acquisitions have been added to the microform collection in in the last month. The Tennessee items were purchased from the bequest from the late DGS member, Barbara Gallup.

- [AZ]** Nonstatistical Manifests and Statistical Index Cards of Aliens Arriving at Douglas, Arizona, July 1908-December 1954. 4 rolls.
- [CA]** Index to Passenger Lists of Vessels Arriving at San Pedro/Wilmington/Los Angeles, California, 1907-1936. 7 rolls.
- [MA]** Massachusetts Vital Records: Lawrence 1847-1905. Microfiche, 277.
- [MS]** Letters Received by the Secretary of the Treasury and the General Land Office from the Surveyor General for Mississippi April 1, 1803--November 4, 1831. M1329, 4 rolls.
- [NC]** Alamance County Record of Wills, v. 1-17, 1849-1963; Cross Index to Wills 1850-1963. 9 rolls.
- [NC]** Alexander County Record of Wills, v. A-E, 1865-1968; Cross Index to Wills 1865-1970. 3 rolls.
- [NC]** Alleghany County Record of Wills, v. A-E, 1870-1970. 3 rolls.
- [NC]** Anson County Record of Wills, v. 1-2, 1751-1779, 1802-1812; v. A-H, 1790- 1955; Cross Index to Wills, 1751-1968. 5 rolls.
- [NC]** Ashe County Record of Wills, v. A-I, 1816-1966. 3 rolls.
- [NC]** Avery County Record of Wills, v. 1-3, 1911-1968. 1 roll.
- [NC]** Beaufort County Old Wills (Original Wills) 1720-1842; Record of Wills, v. 1-10, 1868-1968; Cross Index to Wills 1720-1949. 8 rolls.
- [NC]** Bertie County Record of Wills, v. A-P, 1761-1968; Index to Wills 1761-1970. 8 rolls.
- [NC]** Bladen County Record of Wills, v. 1-6, 1766-1968; Index to Wills. 5 rolls.
- [NC]** Brunswick County Record of Wills, v. A-, 1764-1954; Cross Index to Wills 1764-1963. 2 rolls.
- [NC]** Buncombe County Record of Wills, v. A-GGG, 1831-1964. 19 rolls.
- [NC]** Burke County Record of Wills, v. I-II, 1795-1905; v. 1-9, 1868-1963. 5 rolls.
- [NC]** Cabarrus County Record of Wills, v. 1-13; 1796-1966; Index to Wills. 8 rolls.
- [NC]** Caldwell County Record of Wills, v. A-I, 1827-1966. 5 rolls.
- [NC]** Camden County Record of Wills, v. -, -, E-G, 1815-1966; Index to Wills. 4 rolls.
- [NC]** Carteret County Record of Wills, v. A-L, 1745-1968; Index to Wills. 7 rolls.
- [NC]** Caswell County Record of Wills v. A-T, 1777-1868; v. A-F, 1868-1954; v. 1- 3, 1958-1970; Index to Wills. 15 rolls.
- [NC]** Catawba County Record of Wills, v. 1-10, 1843-1966. 5 rolls.
- [NC]** Chatham County Record of Wills, v. A-I, 1780-1931. 4 rolls.
- [NC]** Cherokee County Record of Wills, v. 1-D, 1869-1966; Cross Index to Wills. 3 rolls.
- [NC]** Chowan County Record of Wills, v. 1, A-G, 1760-1942; Index to Wills. 6 rolls.
- [NC]** Clay County Record of Wills, v. A-C, 1870-1966; Index to Wills. 2 rolls.
- [NC]** Cleveland County Record of Wills, v. 1-11, 1841-1965; Cross Index to Wills 1841-1941. 6 rolls.
- [NC]** Columbus County Record of Wills, v. A, 2-7, 1808-1967; Index to Wills. 5 rolls.
- [NC]** Craven County Record of Wills 1708-1716, v. A-V, 1784-1968; Cross Index to Files, 1784-1916; Index to Wills 1914-1970. 16 rolls.
- [NC]** Cumberland County Unrecorded Wills 1754-1897. 1 roll.
- [NC]** Currituck County Record of Wills, v. 1-8; Cross Index to Wills 1761-1920; Index to Wills 1928-1966. 5 rolls.
- [NC]** Dare County Record of Wills, v. 1-7, 1870-1966. 3 rolls.
- [NC]** Davidson County Record of Wills, v. 1-17, 1823-1967. 12 rolls.
- [NC]** Duplin County Record of Wills, v. A, 1-16, 1760-1968; Cross Index to Wills. 9 rolls.
- [NC]** Durham County Record of Wills, v. A-B, 3-16, 1881-1966. 8 rolls.
- [NC]** Edgecombe County Record of Wills, v. A-S, 1749-1968; Cross Index to Wills, 1760-1936. 11 rolls.
- [NC]** Franklin County Record of Wills (Originals) v. 1-2, 1787-1838; A-Y, 1785-1964; Index to Wills 1785-1978. 15 rolls.
- [NC]** Gaston County Record of Wills, v. 1-11, 1847-1963; Cross Index to Wills. 6 rolls.
- [NC]** Gates County Record of Wills, v. 1-7, 1779-1964; Cross Index to Wills. 4 rolls.
- [NC]** Graham County Record of Wills, v. 1-2, 1873-1966. 1 roll.
- [NC]** Greene County Record of Wills, v. 1-4, 1868-1966. 3 rolls.
- [NC]** Halifax County Record of Wills, v. 1-17, 1758-1963; Cross Index to Wills; Index to Wills. 11 rolls.
- [NC]** Hartnett County Record of Wills, v. 1-2, 1885-1967. 6 rolls.
- [NC]** Haywood County Record of Wills, v. A, 1/2, 1-10, 1808-1966. 5 rolls.



- [NC] Henderson County Record of Wills, v. 1-18, 1841-1966. 10 rolls.
- [NC] Hertford County Record of Wills, v. A-G, 1829-1963; Cross Index. 4 rolls.
- [NC] Hoke County Record of Wills, v. 1-3, 1911-1966. 1 roll.
- [NC] Hyde County Record of Wills, v. 1-14, 1764-1968. 7 rolls.
- [NC] Iredell County Record of Wills, v. 1-19, 1790-1965. 9 rolls.
- [NC] Jackson County Record of Wills, v. A-E, 1868-1966. 2 rolls.
- [NC] Johnston County Record of Wills, v. 1-17, 1760-1962. 9 rolls.
- [SC] South Carolina Death Index, 1935-1944. 16 fiche.
- [TN] Cannon County Deed Index, Apr. 1836-Nov. 1917. 1 roll.
- [TN] Carroll County Estates Inventories Feb. 1852-Dec. 1899. 1 roll.
- [TN] Carroll County Marriages Mar. 1838-Aug. 1873. 1 roll.
- [TN] Carroll County Settlements, Administrators Apr. 1847-May 1880; Dentist Register July 1919-July 1940. 1 roll.
- [TN] Carroll County Minutes Guardian May 1885-Dec. 1885; Bonds Guardian Dec. 1882-Jan. 1901. 1 roll.
- [TN] Carroll County Estates Insolvent Nov. 1853-Apr. 1907. 1 roll.
- [TN] Cheatham County Estates Insolvent Aug. 1859-Aug. 1951. 1 roll.
- [TN] Cheatham County Marriages May 1856-Sep. 1938. 1 roll.
- [TN] Cheatham County Deed Index 1856-1876; 1891-1921. 1 roll.
- [TN] Cheatham County Inventories Feb. 1848-Dec. 1865; Bonds & Letters of Administration Dec. 1878-July 1921. 1 roll.
- [TN] Claiborne County Wills & Inventories Feb. 1812-May 1892. 1 roll.
- [TN] Claiborne County Marriages June 1838-Sep. 1868. 1 roll.
- [TN] Claiborne County Deed Index Dec. 1801-May 1910. 1 roll.
- [TN] Coffee County Marriages Jan. 1853-Jan. 1897. 1 roll.
- [TN] Coffee County Deed Index May 1836-Nov. 1910. 1 roll.
- [TN] Decatur County Deed Index Apr. 1846-Dec. 1944. 1 roll.
- [TN] DeKalb County Settlement Administrators May 1846-Oct. 1907. 1 roll.
- [TN] DeKalb County Estates Insolvent June 1846-Nov. 1946. 1 roll.
- [TN] DeKalb County Marriages Aug. 1848-Apr. 1887. 1 roll.
- [TN] DeKalb County Deed Index Mar. 1838-Jan. 1926. 1 roll.

- [TN] Dickson County Settlement Administrators Apr. 1823-Feb. 1860. 1 roll.
- [TN] Dickson County Marriages Jan. 1817-Dec. 1899. 3 rolls.
- [TN] Dickson County Deed Index Mar. 1804-Apr. 1912. 1 roll.
- [TN] Fayette County Marriages Feb. 1838-Dec. 1869. 1 roll.
- [TN] Fayette County Settlement May 1858-Apr. 1860; Inventories Jan. 1854-Mar. 1856. 1 roll.
- [TN] Fentress County Deed Index Nov. 1820-Oct. 1904. 1 roll.
- [TX] Temporary and Nonstatistical Manifests of Aliens Arriving at Eagle Pass, Texas, July 1928-June 1953. 12 rolls.
- [TX] Manifests of Alien Arrivals at Yseleta, Texas, 1929-1954. 7 rolls.

During the month of September the Genealogy Section received the news that the city had at long last approved a binding contract. There were three days to spend the funds. (We received a two-day extension.) Thanks to DPL staff and DGS volunteers Barbara Brown, Sue Dexheimer, and Susan Powdrill, well over three thousand volumes were prepared to be sent to the bindery.



**Subscribe to *FGS Forum*  
You're Entitled to a Discount!**

DGS is a member of the Federation of Genealogical Societies, a confederation of more than 450 societies in the United States and Canada. One benefit to you is that you are entitled to a subscription to its quarterly magazine, *Forum*, at the discounted price of only \$11 per year.

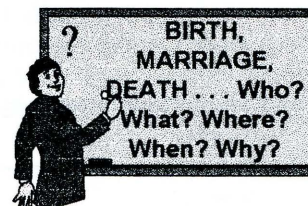
*Forum* has the most complete calendar of events of any genealogical magazine. A typical issue shows as many as 50 different seminars and lectures being held throughout the United States. A handy calendar of events by state allows you to easily pinpoint which events are in your area.

The column "State Reporting," lists many activities of various genealogical societies and other groups that might advance your research. The "Records Access" column describes the status of accessibility of information by state. Other regular columns appear for family associations, ethnic/international, book reviews, and news briefs. If work of a particular society is unusually significant, their efforts appear in the "Society Spotlight" column.

Subscribe now! Send \$11.00 to FGS Forum, P.O. Box 830220, Richardson, TX 75083-0220

# QUERIES

The *DGS Newsletter* goes out to approximately 1400 homes, libraries, and genealogical societies across the United States. One of the benefits of being a DGS member is being able to share your surname queries in this newsletter at no charge. Mail yours today to "Queries" DGS, PO Box 12466, Dallas, TX 75225-0446. Non-members are welcome to submit queries but a \$3.00 charge is requested for each query. The *DGS Newsletter* editor reserves the right to edit queries for space and clarity.



## PETTIT (PETIT, PETTEAT)

I would like information on the parents of Walker PETTIT, born in Kentucky, ca. 1793-95. He was in the War of 1812, and discharged in 1815. He married Kesiah (Kiziah); her surname, birth and marriage dates and places are unknown. The PETTITs were found living in Ouachita Parish, LA in 1830. According to the listing of the "Character Certificate" in the Land Office of Texas, Walker was in Texas on the 23rd of May, 1835.

*Eloise King, 5214 McCommas, Dallas, TX 75206-5622; phone 214.827.8616; e-mail JRCREDILLEIII@prodigy.net*

## BOWEN, PRICE, KNIGHT

Looking for someone with information on William Wesley BOWEN and wife, Laura F. PRICE. Both were born around 1860. I believe that Laura Price lived in northeast Dallas county at one time; however, several of their children were born in Mississippi. Their children were Lizzie W. (married Thomas KNIGHT), Effie Emma, Thomas Marvin, Minnie Pearl, Dick, Irene, Harry, and Eugene.

*Jim Foster, 407 Centre St., Dallas, TX 75208; phone 214.942.2119; e-mail FOSTERJL@flash.net*

## RUSSELL, BROWN, HOLT

Researching my maternal grandmother's family who may have come to Texas from Louisiana sometime prior to 1890. Walter BROWN (b. abt 1870, d. abt 1896 during flu epidemic) married Ida Belle RUSSELL (b. abt 1870) Their children were: Ethel (b. Aug 9 1891, m. Perry HOLT Dec. 25, 1919 in Newcastle, TX, d. Aug 1975) Russell H. (b. abt 1893) Lena (b. abt 1894) Walter Ellert (b. abt 1896) The family resided in Bridgeport at one time. Would like to locate Russell family (possibly in LA) especially.

*Stephen J. Clark, 434 Beard St., Cedar Hill, TX 75104; e-mail syerseeker@aol.com*



"Tis the gift to be simple, 'tis the gift to be free. 'Tis the gift to come down where we are to be, and when we find our homes 'twill be just right; 'twill be in the land of love and delight." *From an Old Shaker Hymn*

# DGS Membership Application or Renewal



Name \_\_\_\_\_  
 Spouse \_\_\_\_\_  
 Address \_\_\_\_\_  
 City \_\_\_\_\_ State \_\_\_\_\_ Zip Code \_\_\_\_\_ - \_\_\_\_\_  
 Home Phone ( ) \_\_\_\_\_ Fax ( ) \_\_\_\_\_ E-mail address \_\_\_\_\_

*The above information will be used to publish a membership roster. Please specify what you do not want published.*

Check one: New member \_\_\_\_\_ Renewal \_\_\_\_\_ \* For renewals only: *DGS Journal* receive \_\_\_\_\_ OR exchange \_\_\_\_\_

Annual Membership, per individual or couple \$20 \_\_\_\_\_  
 (spouse's name must be on application for membership benefits)

Annual Sustaining Membership (\$30 is tax deductible) \$50 \_\_\_\_\_

Annual Patron Membership (\$80 is tax deductible) \$100 \_\_\_\_\_

Life Membership, per individual, under 65 years old \$500 \_\_\_\_\_

Life Membership, per individual, over 65 years old \$300 \_\_\_\_\_

Contribution to Special Funds (1) \_\_\_\_\_ (2) \_\_\_\_\_ (3) \_\_\_\_\_  
 (see *Special Funds* section)

Check # \_\_\_\_\_ Date \_\_\_\_\_ TOTAL \_\_\_\_\_

**Make check payable to DGS. Mail to: Dallas Genealogical Society, P. O. Box 12446, Dallas, TX 75225-0446**

**Surname Exchange:** Each member may submit up to 8 surnames & localities to be used in a DGS database for exchange with other researchers. By submitting, you agree to having your name, address, phone, surnames available for use by others.

Surname	State	County (One entry per line)	Country	Earliest Date in Locality	Latest Date in Locality
<i>Example: Johnson</i>	<i>TX</i>	<i>Tarrant</i>	<i>USA</i>	<i>1860</i>	<i>1950</i>

**Volunteer Opportunities:** Willing to work for DGS? If so, please check all the areas where you could volunteer. **Thanks!**

Hospitality                       Computer/Data Entry                       Newsletter                       Board/Committees  
 Work @ special events                       Present workshops                       Library work                       Other  
(please specify) \_\_\_\_\_

# DGS Calendar of Events

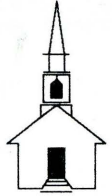
## NOVEMBER 1998

- 11 Board meeting - 7:00 p.m.
- 12 Computer Interest Group meets  
(see inside cover for time and place)
- 14 Cyndi Howells at the Lakewood Theatre  
1st of this year's Lecture Series
- 17 African American Interest Group meets  
(see inside cover for time and place)
- 23 DGS Regular Monthly Meeting  
"A Treasure Map to the Past" 7:00 p.m.  
(see page 180 for more information)



## DECEMBER 1998

- 9 DGS Board meeting - 7:00 p.m.
- 10 CIG meeting
- 14 DGS Meeting: Awards  
Ceremony & Party  
(see cover page for details)
- 15 AAIG meeting



## JANUARY 1998

- 13 DGS Board meeting - 7:00 p.m.
- 14 CIG meeting
- 19 AAIG meeting
- 21 GENTECH
- 25 DGS Meeting: *What Will That Tell Me?*  
Genealogical Gems for Texas Research  
with Carol Roark
- 30 SLC Orientation Workshop  
(see page 181 for more information)

Dallas Genealogical Society  
PO Box 12446  
Dallas, TX 75225-0446

Nonprofit  
Organization  
U.S. Postage Paid  
Dallas, Texas  
Permit No. 7123



Volume 22, Number 10 (Issue 194)  
November/December 1998