

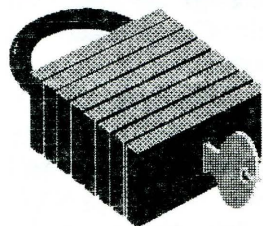
# DGS NEWSLETTER



March 1999

Volume 23, Number 3 (Issue 197)

## Locked In at the Library!



Saturday, March 20, 1999

Approximately sixty DGS members will spend the first hours of spring on the eighth floor of the downtown Dallas library. From 6:00 p.m. until the wee morning hours hardy

genealogists will be scanning microfiche, copying extracts from books and microfilm, perusing CD's and online resources, and digging through dusty files, all to help raise money for the society and find those illusive ancestors! If staying up until the crack of dawn in order to have a crack at those records appeals to you, send in your registration today! (See the February issue of this newsletter for the lock-in registration form.) Refreshments will be available and attendees may leave at any time. This is a "members-only" activity, but if you'd like to join the Dallas Genealogical Society, there is a membership application inside this issue. (See page 51.) Ask the people who attended last year's lock-in and you'll find that it was an enjoyable and rewarding way to spend the night, and benefit DGS!

### INSIDE THIS ISSUE:

Library Lock-In/ March Meeting Topic	37
DGS News & Upcoming Events	39
1998 Writing Awards Winners	40
New Land Institute Makes Its Debut!	42
Dallas County Records Inventory Project	43
Article on Civil War Military Prisons	44
The Bulletin Board	46
News from the 8th Floor	48
Recent Acquisitions	48
Index to Genealogical Publications	49
Queries	50
Membership Application	51
DGS Calendar of Events	52

## March Meeting Features Lloyd Bockstruck Special & Unusual Resources in the Genealogy Department of the Dallas Public Library

Beverly Johnston Holmes, VP Programs

You've just returned from a research trip to the county courthouse where your ancestors lived, or to the state archives of their residence, or to Salt Lake City, and then discover that the records you've found there had been at Dallas Public Library all the time. Or, you think you've looked and found all the information available about your family on the 8th floor. How can you be sure that was the information available?

At our March meeting Lloyd Bockstruck will discuss the treasures that seem to be hidden to many of us as well as unique and unusual resources just waiting for us to discover them.

Perhaps it has been a while since you researched at the downtown library for one of your family lines. You might not be aware of the multitude of new materials that has been added recently. Over the past year there have some sizable bequests to the Genealogy Department that have made possible the purchase of many new records on microfilm, microfiche and in print. While our monthly Newsletter does list some recent acquisitions, we are told that it is almost a year behind in keeping up with these acquisitions.

You won't want to miss learning about all these exciting acquisitions. Please join us on Monday, 22 March 1999. Don't forget: the meeting begins at 7:00 p.m., but we have coffee, cookies and chat time at 6:30 prior to the meeting. Visit the DGS Sales table too and see what's new!







Dallas Genealogical Society  
Post Office Box #12446  
Dallas, Texas 75225-0446



Founded in 1955, the Dallas Genealogical Society (DGS) is the oldest organization of its kind in Texas. It is a nonprofit, tax-exempt corporation and a member of the Federation of Genealogical Societies (FGS). The object of this society shall be to create, foster, and maintain interest in genealogy; to assist and support the genealogy section of the J. Erik Jonsson Central Library in Dallas, Texas, or to its legal successor; and to collect, preserve, copy, and index information relating to Dallas County and its early history.

### Executive Board

#### Officers:

Carole Chew Ruska ..... President  
214.324.2928  
Bill Benson ..... Exec. VP, Fundraising  
214.352.0572  
Beverly Johnston Holmes ..... VP, Education & Programs  
972.241.3034  
Vergie L. Freeman ..... VP, Membership  
972.394.1946  
Hallie Price Garner ..... VP/Editor, *The Dallas Journal*  
214.349.3869  
Jill M. Clark ..... VP/Editor, *DGS Newsletter*  
972.293.3994  
Suzan Younger ..... Recording Secretary  
214.381.5156  
Judy Gilreath Johns ..... Treasurer  
972.231.2000

#### Directors:

Everett & Betty Erikson ..... Sales  
972.242.1837  
Helen J. Wilson ..... Special Interest Groups  
972.475.2895  
Rudy & Jo Ann Stanislav ..... Mailing  
972.223.1386  
Sheila White Huckaby ..... Publications  
972.867.1785  
Kim Carney ..... Publicity  
214.827.4922  
Susan Powdrill ..... Volunteer Coordinator  
972.458.8580

#### Appointed by the President:

Lloyd Dewitt Bockstruck ..... Library Liaison  
214.670.1433 (wk)  
Barbara Ware ..... Parliamentarian  
972.307.8874  
Judy Gilreath Johns ..... FGS Delegate  
972.231.2000  
Barbara Dossett ..... Database Coordinator  
214.339.7149

#### Regular Meetings:

Unless otherwise indicated, DGS regular meetings are held on the 4th Monday, Jan. - May, and Sept. - Nov., in the auditorium of the J. Erik Jonsson Central Library (Dallas Public Library), 1515 Young Street, in downtown Dallas. Meetings begin at 7:00 p.m. with a reception at 6:30 p.m. in the East/West Room. Regular meetings are free, and visitors/guests are welcome.

#### Computer Interest Group

(DGS/CIG): Unless otherwise noted, the DGS Computer Interest Group meetings are held at 6:30 p.m. on the 2nd Thursday, Jan. - May, and Sept. - Nov. in the auditorium of the library. Additionally the DGS/CIG holds a "question & answer" period in the library's auditorium one hour prior to the regular DGS monthly meetings. Meetings are free, and visitors/guests are welcome. E-mail Cheryl Mann at [manncl1@airmail.net](mailto:manncl1@airmail.net) for further information.

#### DGS African-American Interest Group (AAIG):

Unless otherwise indicated, meetings are held in the East/West Rooms of the library on the third Tuesday of each month at 6:30 p.m. Meetings are free, and visitors and guests are welcome.

#### Our Home Page Address (URL):

<http://www.dallasgenealogy.org>

Our E-Mail Address: [dgs@chrysalis.org](mailto:dgs@chrysalis.org)

Voice Mail Number: 214.670.7932

#### Membership

Individuals, libraries, or societies may apply for membership. Dues are \$20 for twelve consecutive months, with membership beginning the month of payment. New member dues and renewals should be mailed to: DGS, PO Box 12446, Dallas, TX 75225-0446, and marked "Attn.: VP, Membership."

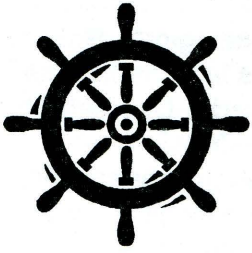
Current members receive the *Dallas Journal* and the *DGS Newsletter*.

#### Newsletter

The *DGS Newsletter* is published monthly from Jan.-May and Aug.-Oct. with bi-monthly issues published in June/July and Nov./Dec. Copy deadline for the May 1999 newsletter is 1 April 1999. All articles and correspondence for the *DGS Newsletter* should be mailed to the society address listed above to the attention of the newsletter editor. Articles appearing in the *DGS Newsletter* may be reprinted only upon receipt of written permission from the author. Credit should be given to the author & acknowledgment given the *DGS Newsletter* as the source. Letters requesting reprint permission should be sent to the newsletter editor. Printed by Arrow Reprographics, Inc., 102 Northlake Shopping Center, E. Northwest Hwy., Dallas, TX 75238 © Dallas Genealogical Society







## President's Message

**Carole Chew Ruska,**  
President

The Executive Committee has met with Mr. Salazar, Director of the Library, and Mr. Smiley, Computer Technology person. We have also talked with Ms. Stern, Friends of the Library Vice President, to gain more insight into the 8<sup>th</sup> Floor Renovation Project. DGS must develop a plan and a "needs list" for the Genealogy Section for input into this project. If you would like to put in your two cents worth about what facilities, equipment, and changes you would like to see in the renovation, you can e-mail us at [dgs@chrysalis.org](mailto:dgs@chrysalis.org) or leave a message on the voice mail 214.670.7932. We would like our membership's ideas on this project.

This renovation project is poor timing for DGS, although we certainly welcome expansion at any time. We just finished our own Capital Expansion Program in 1996 followed by the FGS Conference in 1997, both of which were enthusiastically endorsed and supported by the membership. We raised record amounts of money for DGS with these projects, and now are faced once again with asking for your support financially. Within the next month, members will receive a pledge card for the 8<sup>th</sup> Floor Renovation Project to raise money for this project. Please be as generous as you can. This opportunity is too good to decline even though most of us are still tired and broke from the earlier endeavors. So when you receive your pledge card, please remember, that it is easier to write a check than hold a convention!

The DGS Nominating Committee for this year was elected at the February meeting. They will be searching for people to carry on the work of the society. Some Board members will remain while others will request replacement. The nominating committee has the job descriptions for each open office, and you will know what is being asked of you as a Board member. There are no easy jobs, no "in name only" jobs, no two-nights-a-month jobs, and few perks. Sounds great, doesn't it? The Board works very hard to keep DGS one of the best genealogical societies, and the Genealogy Department of the Dallas Public Library as one of

the top five in the country. Membership is now at an all-time high, and we are already planning into the next Board year. If you think you can serve in any capacity, please call Susan Powdrill, Volunteer Coordinator and member of the nominating committee, and give her your name. She will submit your name and the nominating committee will contact you to match you with the needed positions. Please consider serving as a Board member. WE NEED YOU!

Well, let's see . . . in this one message I have asked for your ideas, money, time, and service. I guess that about covers it for now. PLEASE RESPOND!

## Editor's 2p

**Jill M. Clark,** VP Newsletter

As a displaced Northerner, I've learned after nineteen years in Texas that spring comes early around here. There's no use referring to the calendar because robins were seen in my yard at the end of January and somebody had daffodils up before Valentine's Day. It's likely that we've had our last freeze and some of us have already started turning over soil, pulling weeds, mowing lawns, and planting vegetables and flowers. The Celtic blood in me cringes at the thought of another long, hot, Texas summer!

Imagine what it must have been like for your immigrant ancestor who came to Texas from Germany in the 1840's; or the Ulster Scot frontiersman in your family tree who forged his way through the wilderness and finally settled his family in what is now the Lone Star State. The soil, the weather, the critters – all had to be reckoned with in order to provide food and shelter for loved ones and just plain survive!

March is a good time to remember these early settlers in Texas; their fight for independence and their hardy, adaptable spirits. Take an afternoon off and sit down with a good history book and something cool to drink. Read about the early Texans and their environs. Visit Old City Park near downtown Dallas, or Penn Farm at Cedar Hill State Park. If you are new to the area take the time to learn the names of the native plants and birds you see. Ask questions of the old-timers and sip tea with them on their front porches. Soon you'll know the difference between a Magnolia and a Mesquite and you'll be adapting to your surroundings – just like the early immigrants did!



## DGS Needs YOU!

Susan Powdrill, Volunteer Coordinator

Due to illness and resignations there are several vacancies at the 8th floor volunteer desk. If you can help during any of the following times, please give me a call at 972.458.8580.

**Sunday: 3 - 5:00 p.m.**

**Monday: 5 - 7:00, and 7 - 9:00 p.m.**

**Wednesday: 7 - 9:00 p.m.**

**Thursday: 7 - 9:00 p.m.**

**Saturday: 9 - 11:00 a.m., 11 - 1:00,  
1 - 3:00, and 3 - 5:00 p.m.**

Remember, when you work at least 2 hours you get free parking for the day. Also, if you live outside the Dallas city limits, you can get a free library card. Not only that, but you also get to meet many very nice people who share a common interest. Hope to hear from you!

### DGS SALES NOTICE

Now on the internet: The Dallas Genealogical Society Sales and Publications Catalogue! Order today by mail or purchase items at a monthly meeting or event. Remember that most of these items are only available through DGS. Our URL is easy to remember: <http://www.dallasgenealogy.org>

## Newest DGS Members

Vergie Freeman, VP Membership

Pat & Leo ALLGEYER

David C. & Marilyn A. BOWMAN

Ann BROHIER

Virgil G. BURKHARDT

Jan HENDERSON

Dr. Len B. HUGHES

M. E. JACKSON

Jo LANGWELL

Valeria Burnett LAWRENCE

Patricia & Jim MARTIN

Henry MAYERS

Frank & Mary Ann REMBERT

Phillissa RUSSELL

Farris MITCHELL & Tres TATYREK

John E. VANDERGRIF

Cindy & Ed WHITE



## 1998 DGS Writing Awards Winners and Participants

The Dallas Genealogical Society wishes to congratulate the authors who participated in the 1998 DGS Writing Awards Competition. Through the competition DGS hopes to encourage genealogical writing and development of genealogical writing skills. Each entry was judged in three areas.

- 1) Genealogical Content (including writing style, numbering system, evaluation of evidence, documentation, and source citation) comprising 50% of the total rating.
- 2) Writing Composition (including word structure and vocabulary, spelling, grammar, usage and style, and mechanics) comprising 25% of the total rating.
- 3) Presentation of Material (including printing quality, general appearance, title page, dedication, bibliography, glossary, etc.) comprising 25% of the total rating.

These areas for judging were assigned to three anonymous judges for the competition. Each judge is an experienced professional in his/her given field. All judges are non-DGS members. Qualifications of the judges are as follows:

- Genealogical content judge -- has national standing in the genealogical field with 25+ years of experience.
- Writing composition judge -- has 20+ years experience as a journalist and editor with various newspapers.
- Presentation of material judge -- has 20 years of experience in the desktop publishing business

Participants and first place winners of the 1998 competition are as follows:

Division I—Category 1, Unpublished Articles—  
Documented Family History or Genealogy

Participant: **Gerard R. Dobson**

*Ezra Bowman of Oxford, Massachusetts*

Division I—Category 2, Unpublished Articles—  
Undocumented Family History Narrative

Participant: **Rosemary Rick**

*Union Widows of the Civil War: A Study of Three Women*

Division I—Category 3, Unpublished Articles—  
General Genealogical Interest

First Place: **Lisa McKinney**



*Coming to Understand Sources: A Case Study in  
"Proper" Genealogy*

Division II—Category 3, Published Articles—General  
Genealogical Interest

Participant: **Hallie Price Garner**

*Marriage Records from the Obituaries in the  
Mulberry Gap Association of Baptists Minutes 1893-  
1922*

Division III—Category 1, Bound Books—  
Documented Family Genealogy

First Place: **Rosemary Rick**

*Conrad Neun and his Descendants 1849-1920, St.  
Louis*

Division III—Category 2—Bound Books—  
Documented Family History Narrative

Participant: **George Pettett**

*Legends, Plain Truths, and Probabilities: A  
Crawford/McWilliams Chronicle*

Division III—Category 4, Bound Books—Book of  
Historical or Genealogical Interest

First Place: **Della Gray Barthelmas**

*The Signers of the Declaration of Independence: A  
Biographical and Genealogical Reference*

Division III—Category 5, Bound Books—Book of  
Abstracted Material

First Place: **Jim Monaghan**

*Divorces—Dallas County, Texas 1846-1905*

Division IV—Category 2, Manuscripts and Informally  
Bound Books—Documented Family History Narrative

Participant: **Art Hendon**

*Georgia-Alabama Hendon Family History*

Division IV—Category 3, Manuscripts and Informally  
Bound Books—Undocumented Family History  
Narrative

Participant: **Sherry Butler**

*A Century of Living: The Story of Grandma Ming*

Participant: **Mary Noel Peters Wood**

*An Ordinary Hero, My Dad: Joseph Franklin Peters,  
M. D. 1909-1980*

Division IV—Category 4, Manuscripts and Informally  
Bound Books—Book of Historical or Genealogical  
Interest

Participant: **Gerald R. Post**

*First Guide to Civil War Genealogy and Research*

Note: DGS is saddened to announce that Sherry  
Butler died unexpectedly in Dec. 1998. She was 51.

## Mark Your Calendars!

**DGS Fall Workshop  
Coming Soon**



October 16, 1999

Dallas Convention Center

SEE YOU THERE



Announcing the . . .

## LAND INSTITUTE

22-25 July 1999

The Dallas Genealogical Society is sponsoring a new institute concept. We have shortened the time to two-and-a-half days and three evenings, AND reformatted the institute into a short, intensive workshop on one specific subject: **LAND**. We have moved the institute to the Dallas Public Library so genealogists can also do research at this excellent facility.

More and more genealogists are discovering the value of learning the skills necessary to place their ancestor's property on a USGS topographical map (*topo*, for short) to resolve research problems. The "Land, Land, and *More Land*" Institute is designed to acquaint you with the rudimentary skills needed to understand how to read deeds and plat them. You will learn techniques to overcome obstacles such as water and how to put together a neighborhood on a USGS "topo" map. All necessary equipment such as land measure compasses and engineer's rulers are supplied, but students are encouraged to bring calculators. Students will also be able to use the DPL map collection and Genealogy Department Friday and Saturday evenings.

Instructors are Mary McCampbell Bell from Virginia, and Birdie Monk Holsclaw from Colorado, both national lecturers and experts on land records and platting. Birdie's husband developed the *Black Oak Mapper* computer software program for platting deeds. Interactive land sessions and hands-on platting provide the skills you need for solving your own land problems.

Our own Lloyd Bockstruck will open the Institute on Thursday evening (6:00-9:00) with a talk on land records in the Genealogy Department. Darlene Brimmage will discuss the topographical and historical maps located in the Dallas Public Library. Friday and Saturday (9:00-4:00) feature land classes and platting exercises. Friday and Saturday (6:00-9:00) evenings cover using topographical maps and research assistance. Sunday (9:00-1:00) begins with a brunch at the Ramada Plaza and lessons in public land records and platting. Much information, skills, and research are packed into this institute. We hope this schedule, which requires only one day of vacation for working people, is more convenient and less costly for genealogists. It will be well worth your time and money.

Cost of the Institute is \$200.00. This covers the land platting kit and handouts, Friday and Saturday lunches, brunch Sunday, and evening classes/research time. Space is limited to 100 pre-registered students. **So that we might have adequate materials for the workshops, no registrations or "walk-ins" will be permitted after 1 July.** Please send \$100 deposit when your decision is made as we reserve the right to cancel the Institute if minimum registration is not reached by 15 May 1999. Full refunds will be issued in this case.

Brochures and the DGS website give full schedule and hotel information. A registration form is printed below and at our website.



### LAND INSTITUTE REGISTRATION FORM

Name \_\_\_\_\_

Address \_\_\_\_\_

City/State/Zip \_\_\_\_\_

Phone \_\_\_\_\_ Email \_\_\_\_\_

\_\_\_\_\_ I need assistance in finding a room mate.  
(Not guaranteed)

Fee \$200.00 \$ \_\_\_\_\_  
(Includes platting kit, Friday/Sat lunches, Sunday brunch)

\$100 Deposit \$ \_\_\_\_\_  
(Must be postmarked by 1 July 1999)

Balance \$ \_\_\_\_\_  
(Due at registration 22 July 1999)

Checks to: **Dallas Genealogical Society**

Mail to: DGS Land Institute  
P. O. Box 12446  
Dallas, TX 75225-0446

DGS cannot accept phone or credit card registrations.  
Voice Mail 214.670.7932 will say if institute is sold out.  
Check our website: <http://www.dallasgenealogy.org>





An Update on --

## The Dallas County Records Inventory Project

Shirley Sloat

Pictured is part of the team of DGS members who are currently involved in inventorying records of Dallas County. Pictured on the left is Lois Dillard, the

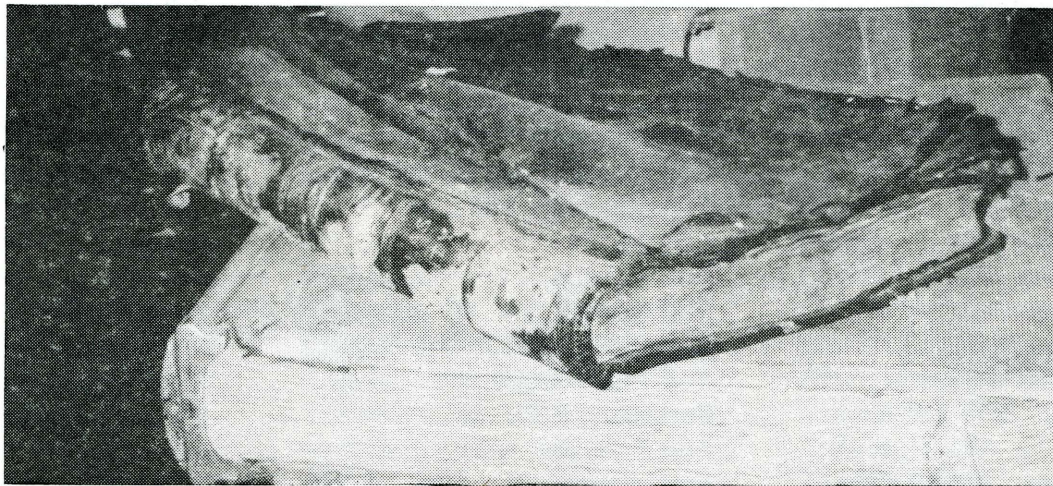


County Records Coordinator, along with Jim Monaghan, Shirley Sloat, Dava Ladymon, and Alan Miller. Not shown is the most recent member, Kathy Williston.

Begun in January 1998, the project is expected to last 2-3 years, and will result in an inventory of existing Dallas County records showing the record type, its official retention period, and the dates and data content of the various records. The majority of 1998 was spent at the "old archives" building on Harry Hines Boulevard. The attached picture gives an indication of the conditions there, which have been greatly improved by a move to a newer records storage facility off Highway 30 near Westmoreland. When completed, it is expected

that the record information will be published appropriately in book and/or online format so that both researchers and county personnel will know exactly what data is available.

Additional projects that have evolved from this inventory effort include Dava Ladymon's publication of delayed birth information, and Shirley Sloat's compilation of a list of the names and terms of Justices of the Peace since the 1846 origination of Dallas County.



### ~ From the DGS Newsletter Archives ~

Issue #19, September 1978 "... DGS membership has topped the magic number of 500!"

Issue #20, October 1978 "... The Society has purchased an IBM Selectric II to be used by the Editor and other members in preparing material for publication. It will be in the home of Gwen Neumann, Vice President, Publications."

Issue #21, November 1978 "... Gift: In honor of our Society's 24th Anniversary, Mrs. Harry Joseph Morris presented to the Genealogical Department of the Dallas Public Library the book: *Index to Books About Texas Before 1889*, by Valentine Overton King." (The newsletter at this time was just one page, front and back!)



# Was Your Ancestor in a Military Prison of the Civil War?

By Sammie Lee and Gerri Brannan

(Sammie Lee and Gerri Brannan are staff members of the Genealogy Section, J. Erik Jonsson Central Library, Dallas Public Library.)

During the American Civil War (1861-65) a total of almost 410,000 Union and Confederate soldiers were held in military prisons. If you've obtained the military service record of your ancestor, it's possible you found a notation concerning his capture and imprisonment in one of these facilities. As the "inquiring genealogist" forever seeking answers, you may also have tried to locate more information on the prison where your gallant warrior was held. Perhaps you have had little or no luck.

Good news! Now, there is help to be found in a fairly new book, *Portals to Hell: Military Prisons of the Civil War*, by Lonnie R. Speer. Published in 1997, Mr. Speer's book is a comprehensive study of all major prisons, both North and South. He has included information on locations, time periods, numbers of POWs held, relationships, conditions, diseases, death rates and causes (56,000 soldiers died in these facilities), and much more. Mr. Speer used official documents, newspapers, letters, diaries, and manuscripts to compile a very readable history on this subject.

*Portals to Hell* is located in the History and Social Science Division of the Dallas Public Library (call number 973.771 S742P). The good news is this book circulates and can be checked out if you have a valid DPL card. The book is also available in book stores (list price, \$34.95) and is available on the Internet from Amazon Books (<http://www.amazon.com>) for their price of \$24.47.

Below is a list of the Union and Confederate prisons as shown in Mr. Speer's book (Appendix C: Prison Quick-Reference Guide, page 323-340.) This list also includes the type of facility, years in existence, maximum capacity, the most POWs held, escapes, and deaths.

## United States Military Prisons (Union)

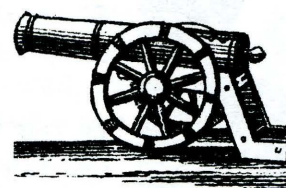
Atheneum Prison, WV	Edward's Island, NY	Indianapolis, IN
Albany Penitentiary, NY	Elmira, NY	Irving Block, TN
Allegheny City, PA	Evansville, IN	Jefferson City, MO
Alton, IL	Forest Hall, DC	Johnson's Island, OH
Arsenal Penitentiary, DC	Fort Columbus, NY	Kansas City, MO
Baltimore City Jail, MD	Fort Craig, NM	Knoxville, TN
Bedloe's Island, NY	Fort Delaware, DE	Lafayette, IN
Benton Barracks, MO	Fort Jefferson, FL	Lexington, KY
Bingham Building, MO	Fort Lafayette, NY	Little Rock, AR
Camp Butler, IL	Fort Massachusetts, MA	Louisiana State House, LA
Camp Chase, OH	Fort McHenry, MD	Louisville, KY
Camp Dennison, OH	Fort Mifflin, PA	Ludlow Street Jail, NY
Camp Douglas, IL	Fort Monroe, VA	Lynch's Slave Pen, MO
Camp Hoffman, MD	Fort Norfolk, VA	Madison, WI
Camp Morton, IN	Fort Pickens, FL	Mare's Island, CA
Camp Randall, WI	Fort Pulaski, GA	Maxwell House, TN
Carroll Prison, DC	Fort Riley, KS	McLean Barracks, OH
Castle Thunder, MD	Fort Schuyler, NY	Memphis, TN
Castle Williams, NY	Fort Wayne, IN	Missouri Penitentiary, MO
Charleston, WV	Fort Warren, MA	Morris Island, SC
Chester, PA	Fort Wood, NY	Moyamensing Penitentiary, PA
Chicago, IL	Georgetown, DC	Myrtle Street, MO
Cincinnati, OH	Governors Island, NY	Nashville, TN
Columbus, KY	Gratiot Street, MO	New Albany, IN
Columbus, OH	Guerilla Prison, MO	New Orleans, LA
David's Island, NY	Hart's Island, NY	Newport News, VA
Dry Tortugas Islands, FL	Hilton Head, SC	New York City, NY
Duff Green's Row, DC	Hope Slater, MD	Ohio Penitentiary, OH



Old Capitol, DC  
Paducah, KY  
Parish Prison, LA  
Pittsburgh Penitentiary, PA  
Point Lookout, MD  
Richmond, IN  
Riker's Island, NY  
Rock Island, IL  
St. Charles, MO  
St. Louis, MO

Schofield Barracks, MO  
Ship Island, MS  
Springfield, IL  
Springfield, MO  
Tennessee State Penitentiary, TN  
Terre Haute, IN  
Tombs Prison, NY  
Ward's Island, NY  
Washington County Jail, DC

Washington DC, DC  
Western Penitentiary, PA  
Wheeling, WV



### Confederate States Military Prisons

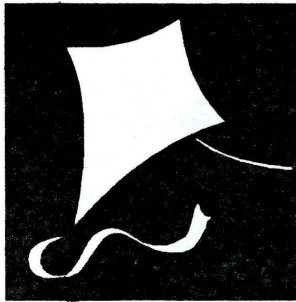
Alexandria, VA  
Americus, GA  
Andersonville, GA  
Atkinson's Factory, VA  
Atlanta, GA  
Augusta, GA  
Barrett's Factory, VA  
Baton Rouge, LA  
Belle Island, VA  
Blackshear, GA  
Botanico-Medical, TN  
Boerne, TX  
Bridge Prison, MS  
Cahaba, AL  
Camp Asylum, SC  
Camp Davidson, GA  
Camp Ford, TX  
Camp Groce, TX  
Camp Lawton, GA  
Camp Maxey Gregg, SC  
Camp Oglethorpe, GA  
Camp Sorghum, SC  
Camp Sumter, GA  
Camp Van Dorn, TX  
Camp Verde, TX  
Camp Godwin, VA  
Castle Lightning, VA  
Castle Morgan, AL  
Castle Pinckney, SC  
Castle Reed, GA  
Castle San Marcos, FL  
Castle Thunder, VA  
Charleston, SC  
Charleston City Jail, SC  
Charleston Guard House, SC  
Charleston Race Track, SC  
Charlotte, NC  
Chattanooga, TN  
Columbia, TN  
Columbia, SC

Crew's, VA  
Dalton, GA  
Danville, VA  
East Point, GA  
E.D.M. Prison, VA  
Edward's Prison, VA  
Florence, SC  
Fort Misner, TN  
Frederick County Jail, VA  
Fulton County Jail, GA  
Galveston, TX  
Gleanor's Factory, VA  
Goldsboro, NC  
Gordonsville, VA  
Grant's Factory, VA  
Greensboro, NC  
Gwathmey Warehouse, VA  
Harwood's Factory, VA  
Hempstead, TX  
Henrico County Jail, VA  
Houston, TX  
Howard's Factory, VA  
Huntsville, TX  
Jackson, MS  
Killian's Mill, SC  
Knoxville, TN  
Libby Warehouse, VA  
Ligon's Warehouse, VA  
Lumpkin's Jail, VA  
Lynchburg, VA  
Macon, GA  
Marietta, GA  
Maxwell House, TN  
Mayo's Factory, VA  
McCurdy's Warehouse, VA  
McDaniel's Jail, VA  
Memphis, TN  
Meridian, MS  
Millen, GA

Mobile, AL  
Montgomery, AL  
New Orleans, LA  
O'Connor House, SC  
Palmer's Factory, VA  
Parish Prison, LA  
Pemberton Warehouse, VA  
Petersburg, VA  
Prince Street Jail, VA  
Prison Town, TX  
Raleigh, NC  
Richland County Jail, SC  
Richmond City Jail, VA  
Richmond, VA  
Roper Hospital, SC  
Ross's Factory, VA  
St. Augustine, FL  
Salado Camp, TX  
Salisbury, NC  
San Antonio, TX  
San Antonio Springs, TX  
San Pedro Springs, TX  
Savannah, GA  
Selma, AL  
Scott's Factory, VA  
Shreveport, LA  
Smith's Factory, VA  
Smith Slave Mart, GA  
Swim's Jail, TN  
Talladega, AL  
Taylor's Factory, VA  
Texas State Penitentiary, TX  
Thomasville, GA  
Tuscaloosa, AL  
Virginia State Penitentiary, VA  
Warwick & Barksdale, Mill, VA  
Whitlock's Warehouse, VA  
Winchester, VA



# The BULLETIN BOARD



✿ = of interest to all

✿ = of interest mainly to computer users

✿ **The Williamson County Genealogical Society** presents its annual seminar at the First United Methodist

Church of Round Rock, TX on March 13, 1999. Dr. John Philip Colletta will be the guest speaker. Topics to be covered include Military Pension and Bounty Land Records, Lesser-Used Federal Records, Using Newspapers for Family History Research and How to Prepare for Successful Research in European Records. Registration is \$30 and begins at 8:00 a.m. Call Jerry Barton at 512.863.8409 or write Wanda Stewart, 7 Applegate Circle, Round Rock, TX 78664 for more information or a registration form.

✿ **Seek Ye First!** You may be one step closer to finding Roman Catholic ancestors after visiting this relatively new online project: Local Catholic Church History and Genealogy Research Guide <http://home.att.net/~mensch-family/CatholicRecords-index.htm>

✿ **The Grand Prairie Genealogical Society** is sponsoring an all day workshop on discovering your Native American Ancestry. William D. Welge, Director, Archives and Manuscripts Division of the Oklahoma Historical Society will be speaking on the Five Civilized Tribes (Cherokee, Creek, Chickasaw, Choctaw, and Seminole). This event is scheduled for Saturday, 27 March 1999 from 9:00 a.m. until 4:00 p.m. Join the GPGS at the Days Inn on E. Safari Parkway in North Grand Prairie. Cost is \$25 after 10 March. Write the GPGS at PO Box 532026, Grand Prairie, TX 75053-2026 for registration information.

✿ **Lacking information about ancestors in Great Britain?** Ron Taylor's UK Census Finding Aids and Indexes: <http://rontay.digiweb.com>

✿ **To err is human . . .** On page 25 of the February 1999 *DGS Newsletter*, an error was made in the

registration form for the Computer Genealogy Workshop. The old address for the society was used instead of the following correct address: PO Box 12446, Dallas, TX 75225-0446.

✿ **The Family History Show** with Michael Matthews has an online program guide and plenty of helpful links to how-to pages as well as other neat stuff for genealogists. Listen to the show live Sunday nights on your radio or at your computer via RealAudio! <http://familyhistory.flash.net> (Note: No "www" prefix)

✿ On April 10th the Texas Research Ramblers in Bryan, TX will be hosting **Dr. George Schweitzer** for a day-long seminar. He will be addressing the following topics in his own unique and entertaining style: Finding Your Ancestor's Parents, Obscure Genealogical Sources, and German Genealogical Research. Contact Sue Foy, 804 Vine, Bryan, TX 77082 for further details.

✿ **Rockwall County, TX now has a USGenWeb project!** Visit <http://www.rootsweb.com/~txrockwa/> for county information, queries, and related genealogy links.

✿ Have you discovered black sheep in your family's past? The Colorado Genealogical Society is sponsoring its **13th Annual Black Sheep Writing Contest**. If you have a story to tell and would like an entry form, send a SASE to "Black Sheep Writing Contest" Colorado Genealogical Society, PO Box 9218, Denver, CO 80209-0218. Don't delay as entries must be postmarked by Friday, 16 April 1999. A prestigious panel of judges will be deciding the outcome of this fun and educational competition and basing their decisions on overall superior quality in written presentation, originality, writing style, documentation, and technique. "Black Sheep" is defined as a "person considered undesirable or disgraceful by his family or group." Your subject need not be related to your family and must have died prior to 1935. B-a-a-a! (Winners will be announced in June.)

✿ **The diary of Dr. Cyrus Bacon, Jr.**, a physician from Michigan, chronicles his work caring for the sick, the wounded and the dying during the U.S.



Civil War. His diary can be found online at <http://www.sos.state.mi.us/history/museum/techstuf/civilwar/diarybac.html>

✿ St. Mary's Genealogy Group meets the third Saturday morning of each month at 10:00 at **St. Mary's Episcopal Church** at Conflans and Story Rd. in Irving. If you live in the area come on by and visit. Call the church office at 972.709.4464 for more information.

✿ **New on RootsWeb!**

TXKAUFMA -- Kaufman County, Texas

TXBRAZOR -- Brazoria County, Texas

TXLUBBOC -- Lubbock County, Texas

*Subscription instructions example:* To subscribe, send SUBSCRIBE message to TXKAUFMA-L-request@rootsweb.com

(or substitute the letter D in the place of the L in the e-mail address for the digest version).

Check out the GenConnect boards for Texas counties

<http://cgi.rootsweb.com/~genbbs/indx/Tx.html>

To subscribe to the RootsWeb Review Newsletter, send SUBSCRIBE message to

RootsWeb-Review-L-request@rootsweb.com

✿ **Let Freedom Ring** is the theme of the spring workshop presented by the Fort Worth Genealogical Society on 8 May 1999. Among those speaking will be Christine Rose on Military Records. Contact the FWGS by writing PO Box 9767, Fort Worth, TX 78147-2767.

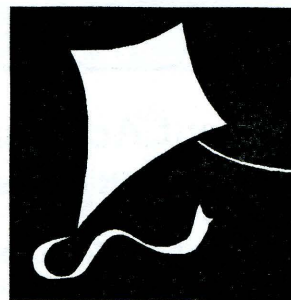
✿ **More RootsWeb!**

<http://istg.rootsweb.com> is the location of a new website for transcriptions of passenger lists. 404 ships' lists can be found and searched from here.

✿ Shopping can be a rewarding experience for organizations like the Dallas Genealogical Society -- especially when you're doing the shopping! Use your **Tom Thumb Reward Card** when you shop Tom Thumb/Simon David stores and designate #4253 for charitable donations.

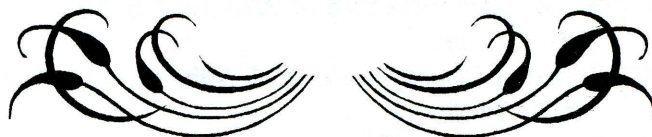
✿ If you did not find a one-page **newsletter survey** in your February 1999 DGS Newsletter, and you are interested in participating, please contact the newsletter editor by e-mail: [Jilliemae@aol.com](mailto:Jilliemae@aol.com), or

by calling the phone number given inside the cover page.



✿ **Attend any of the lectures or workshops** this season? Did you take notes on the material covered, the speaker, the venue, your impressions of the day, etc.?

Consider sharing what you learned with fellow DGS members. Write a critique or review of the experience and submit it to the newsletter for publication. Contact the editor for suggestions and guidelines if you are interested. Thank-you!



#### A Brief History of Cedar Hill, Texas

The name Cedar Hill was derived from the area due to its cedar brakes and elevation: 841 feet above sea level. It is reported to be the highest point between the Red River and the Gulf Coast. (East of the "Hill Country.")

The families of James HOLLAND, Jacob and Drusilla BOYDSTUN, Isaac LOWE, W.S. PETERS, and Robert GROUND immigrated from Illinois to this beautiful area between 1845 and 1848. They decided to settle here because the soil was fertile enough to grow many grains including wheat and oats, and well adapted to the growing of cotton.

Prehistoric animal remains have been discovered in and around Cedar Hill. A sea lizard measuring approximately 37 feet long was excavated several years ago and is on display at Southern Methodist University in Dallas.

Cedar Hill is the second oldest town in the county and would have become the county seat except for one vote.

In 1856 the first church (Methodist) was established. A house to worship in was built in 1860. Around 1900 the present church building was erected.

On April 19, 1856, a tornado destroyed Cedar Hill and many lives were lost. The townspeople worked together and completely rebuilt their city by 1860.

The Historical Society Building was built by the Cedar Hill Historical Society in 1980 on land donated by High Pointe Builders. Later, this property was given to the City of Cedar Hill which maintains the house and land to this date.



# NEWS FROM THE 8th FLOOR

## Recent Acquisitions

### Lloyd DeWitt Bockstruck, F.N.G.S.

- [CT] Barbour Collection of Vital Records General Index, rolls 28-34, 37, 38-41, 43-44, 46-47, 49-59, 61, 63, 65-68, 70-81. 45 rolls.
- [KS] Kansas State Census, 1865. 8 rolls.
- [KY] Adair County Wills Books A-H, 1805-1865. 2 rolls.
- [MA] Massachusetts Vital Records: Methouen, 1714-1905. 103 fiche.
- [MA] Massachusetts Vital Records: Andover 1647-1905. 242 fiche.
- [NC] Davie County Record of Wills, v. 1-5, 1837-1967. 2 rolls.
- [NC] Granville County Record of Wills, v. 1-3, 1772-1962. 9 rolls.
- [NC] Guilford County Record of Wills, v. A-20, 1779-1963. 17 rolls.
- [NC] Person County Record of Wills, v.1-6, 1792-1815. 2 rolls.
- [TN] Claiborne County Deeds, v. A-Z, F2-Q2, Mar. 1857- Apr. 1890. Deed Index Dec. 1801-May 1910. 14 rolls.
- [TN] Claiborne County Wills and Inventories, Feb. 1812-May 1892. 1 roll.
- [TN] Claiborne County Guardian, Administrator, & Executor Settlements, June 1791-Jan. 1797; Wills Feb. 1848-Dec. 1854. 1 roll.
- [TN] Claiborne County Military Discharges v. 1-6, Aug. 1919 -Feb. 1996. 2 rolls.
- [TN] Chester County Court Minutes, Apr. 1889-July 1893, Oct. 1893-Oct. 1904. 3 rolls.
- [TN] Claiborne County Survey Books Apr. 1899-Dec. 1913, Jan. 1838-June 1861; Tax Books Jan. 1899-Dec. 1899, Jan. 1850-Dec. 1873, & Jan. 1881-Dec. 1882. 1 roll.
- [TN] Chester County Deeds Jan. 1891- Mar. 1896; Index 1891-1899. 1 roll.
- [TN] Chester County Tax Books Jan. 1890 -Dec. 1894. 1 roll.
- [TN] Chester County Marriages Apr. 1891- Dec. 1916. 1 roll.
- [TN] Chester County Wills May 1891-Sep. 1931; Insolvent Estates Apr. 1891-Mar.1935; Minutes Apr. 1891- Dec. 1893. 1 roll.

- [TN] Cocke County Administrator & Executor Bonds, Feb. 1877-Sep. 1901; Insolvent Estates Jan. 1897- Feb. 1920.
- [TN] Cocke County Marriages Feb. 1877-Oct. 1884. 1 roll.
- [TN] Cocke County Deeds, June 1865-Feb. 1890. 5 rolls.
- [TN] Cocke County Military Discharges May 1919-Aug. 1995. 3 roll.
- [TN] Cocke County Tax Books, 1876-1888. 3 rolls.
- [TN] Grainger County Minutes June 1796-Aug. 1816, Feb. 1822-Mar. 1857. 3 rolls.
- [TN] Grainger County Chancery Court Enrollments Apr. 1872-Apr. 1876, Minutes June 1848-Dec. 1890. 3 rolls.
- [TN] Grainger County Minutes Apr. 1857-Jan. 1882. 2 rolls.
- [TN] Grainger County Deeds, v. F-N, Jan. 1829-Nov. 1859. 4 rolls.
- [TN] Grainger County Military Discharges, Nov. 1943-1978. 2 rolls.

**LAST NOTICE!!! CALL FOR PAPERS:** Submit lecture proposals now for the 1999 Fall Festival of Genealogy to be presented by the DGS on Saturday 16 October at the Dallas Convention Center. Proposals should include the lecture title and brief outline or abstract; a short summary for the printed program; identification of target audience (beginners, intermediate, advances) your full name, address, phone, and e-mail or fax numbers; and a speaker's biography consisting of two to three sentences including your previous speaking experience. Submit to program chairman Barbara Baylis by 1 April 1999. Barbara may be reached by e-mail ([brbaylis@aol.com](mailto:brbaylis@aol.com)) or by fax -- 214.348.1164. Consult the January 1999 *DGS Newsletter* for further details.



## In Sympathy

Gone, but not forgotten . . . Long-time member and past president of DGS, Margaret Ann Thetford's husband, Conway Thetford, died on 25 January 1999. The president and board members extend their condolences to the family.



# Index to Genealogical Periodicals at the Dallas Public Library as compiled by Carole Chew Ruska

## ARIZONA

978.005 A719	Arizona & the West (cont. as Journal SW below)	v. 1 (1959) - v. 28 (1986)	Univ. of Arizona
979.1005 J86	Arizoniana (no code)	v. 1-2 (1960-61)	Arizona Pioneers Hist. Soc.
929.3791 C785	Copper State Bulletin (AZCS)	v. 6 (1970) - v. 21 (1986)	Arizona State Gen. Soc.
929.3791 J86	Journal of Arizona History (no code)	v. 15 (1974) - v. 27 (1986)	Arizona Historical Soc.
978.005 A719	Journal of the Southwest (AMSW)	v. 29 (1987) - present	Univ. of Arizona & Southwest Center
929.3791 C785	Southern Arizona Gen. Soc. Bulletin (cont. as Copper State Bulletin above)	v. 1 (1965) - v. 5 (1970)	Southern Arizona Gen. Soc. changed to Arizona State Gen. Soc.

## CALIFORNIA

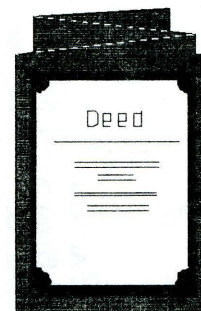
929.1 A538	Ancestors West (CAAW)	v. 9 (1983) - present; v. 13, 15, 18 missing	Santa Barbara County Gen. Soc.
929.27948 A819	Ash Tree Echo (CAAT)	v. 1 (1966) - v. 16 (1981)	Fresno Gen. Soc.
929.3794 C153B	Bulletin - California Central Coast (CACC)	v. 1 (1968) - v. 20 (1987)	Calif. Central Coast Gen. Soc.
929.3794 C153B	Bulletin - San Luis Obispo (cont. from above)	current only	San Luis Obispo County Gen. Soc.
979.4005 C153	California Historical Soc. Quarterly (cont. as California History v. 50) (CACH)	v. 1 (1922) - v. 23 (1944); index v. 1-40; v. 50 (1971) - present	California Historical Soc.
929.37945 S197G	Gold Rush Days; compilations from early newspapers of Stockton, CA (not really a periodical) (not in PERSI)	v. 2 (1979) - v. 6 (1989)	San Joaquin Gen. Soc.
929.105 L722	Lifeline (CALL)	v. 1 (1965) - present; v. 5,6,7,8,13,29 missing	Gen. Soc. of Riverside
929.1 L785	Livermore Roots Tracer (CALA)	v. 2 (1982) - present	Livermore-Amador Gen. Soc.
929.37941 N195Q	Napa Valley Quarterly (Napa Valley Wine Press current only) (CANV)	v. 1 (1983) - v. 2 (1984)	Napa Valley Gen. & Biog. Soc.
929.1 O63Q	Orange County Journal (CAOR)	v. 33 (1996) - present	Orange County Gen. Soc.
929.1 O63Q	Orange County Quarterly; changed to Orange Co. Journal see above	v. 2 (1965); v. 10 (1973) - v. 31 (1994);	Orange County Gen. Soc.
929.37949 R113	Rabbit Tracks (CART)	v. 1 (1983) - v. 5 (1987); v. 13 (1995) - present	Conejo Valley Gen. Soc.
929.105 R321	Redwood Researcher (CARW)	v. 1 (1968) - present	Redwood Gen. Soc.
929.3794 R783	Root Cellar Preserves (CARC)	v. 1 (1979) - v. 8 (1987); v. 18 (1995) - present	Sacramento Gen. Soc.
929.37949 S194	San Diego Leaves and Saplings (CAL S)	v. 14 (1986) - v. 15 (1987); v. 22 (1994) - present	San Diego Gen. Soc.
929.37946 S195	San Francisco Historic Record & Genealogical Bulletin (CAS F)	v. 1 (1963) - v. 3 (1965)	Louis Rasmussen, publisher
929.37947 S231S	Santa Clara County Quarterly; cont. as S. C. Connections v. 24 (CAS Q)	v. 1 (1964) - v. 25 (1987)	Santa Clara Co. Hist. & Gen. Soc.
929.10979 S439	Searcher (CAS R)	v. 2 (1964) - present; v. 30, 33 missing	Southern California Gen. Soc.
929.37949 V468	Ventura County Quarterly (CAVC)	v. 6 (1984) - v. 9 (1987)	Ventura Co. Gen. Soc.
not yet cataloged	Whittier Area Newsletter (CAWN)	current only	Whittier Area Gen. Soc.



# QUERIES



The *DGS Newsletter* editor reserves the right to edit queries for space and clarity. The problem is there have been so few queries lately that she is tempted to add to them! To prevent this from happening, please send yours to "Queries," DGS, PO Box 12466, Dallas, TX 75225-0446. Non-members are welcome to submit queries but a \$3.00 charge is requested for each. Thank-you!



A well-written query, whether you are typing it out to include it here or posting it to a message board online, has a better chance of bringing results to the researcher when it contains the following components: surname in capital letters, given names, especially unusual names or naming patterns in the family, a date and place of earliest known residence, and date and place of last known residence. (You might also include the date of birth, marriage, and death, if known.) Queries are generally brief and to the point and always contain an e-mail or snail mail address so the researcher can be easily contacted.

## **WALKER, SEWARD**

Isaac B. WALKER was born 1858 in Grayson county, Texas. He came to Denton County, Texas when he was a small boy and lived here until 1904 when he moved to Dallas. He married Elizabeth SEWARD in Dallas, 21 Dec. 1881. Their children were Lucius E., Alva M., and Lilla. I would like to contact descendants of Isaac B. Walker and Elizabeth Seward.

*Mina L. Brown, 722 Frame Street, Denton, TX 76201*

\* Correction to last month's Family History Show URL: <http://familyhistory.flash.net> is the right address for the site \*

## **Found on RootsWeb . . . author unknown**

I want ancestors with names like Rudimentary Montagnard or Melchizenick von Steubenhoffmannschild or Spetzntz Giafortoni, not William Brown or John Hunter or Mary Abbott.

I want ancestors who could read and write, had their children baptized in recognized houses of worship, went to school, purchased land, left detailed wills (naming a huge extended family as legatees), had their photographs taken once a year -- subsequently putting said pictures in elaborate isinglass frames annotated with calligraphic inscriptions, and carved voluble and informative inscriptions in their headstones.

I want relatives who managed to bury their predecessors in established, still-extant (and indexed) cemeteries.

I want family members who wrote memoirs, who enlisted in the military as officers and who served in strategically important (and well documented) skirmishes.

I want relatives who served as councilmen, schoolteachers, county clerks and town historians.

I want relatives who 'religiously' wrote in the family Bible, journalizing every little event and detailing the familial relationship of every visitor.

In the case of immigrant progenitors, I want them to have arrived only in those years wherein passenger lists were indexed by National Archives, and I want them to have applied for citizenship, and to have done so only in those jurisdictions which have since established indices.

I want relatives who were patriotic and clubby, who joined every patrimonial society they could find, who kept diaries, and listed all their addresses, who had paintings made of their houses, and who dated every piece of paper they touched.

I want forebears who were wealthy enough to afford, and to keep for generations, the tribal homestead, and who left all the aforementioned pictures and diaries and journals intact in the library.

But most of all, I want relatives I can FIND!



# DGS Membership Application or Renewal



Name \_\_\_\_\_

Spouse \_\_\_\_\_

Address \_\_\_\_\_

City \_\_\_\_\_ State \_\_\_\_\_ Zip Code \_\_\_\_\_ - \_\_\_\_\_

Home Phone ( ) \_\_\_\_\_ Fax ( ) \_\_\_\_\_ Email \_\_\_\_\_

*The above information will be used to publish a membership roster. Please specify what you do not want published.*

Check one: New member  Renewal  \* For renewals only: DGS Journal receive  OR exchange

- Annual Membership, per individual or couple \$20 \_\_\_\_\_  
*(spouse's name must be on application for membership benefits)*
- Annual Sustaining Membership (\$30 is tax deductible) \$50 \_\_\_\_\_
- Annual Patron Membership (\$80 is tax deductible) \$100 \_\_\_\_\_
- Life Membership, per individual, under 65 years old \$500 \_\_\_\_\_
- Life Membership, per individual, over 65 years old \$300 \_\_\_\_\_

Contribution to Special Funds (1) \_\_\_\_\_ (2) \_\_\_\_\_ (3) \_\_\_\_\_  
*(see Special Funds section)*

Check # \_\_\_\_\_ Date \_\_\_\_\_ TOTAL \_\_\_\_\_

**Make check payable to DGS. Mail to: Dallas Genealogical Society, P. O. Box 12446, Dallas, TX 75225-0446**

**Surname Exchange:** Each member may submit up to 8 surnames & localities to be used in a DGS database for exchange with other researchers. By submitting, you agree to having your name, address, phone, surnames available for use by others.

Surname	State	County (One entry per line)	Country	Earliest Date in Locality	Latest Date in Locality
<i>Example: Johnson</i>	<i>TX</i>	<i>Tarrant</i>	<i>USA</i>	<i>1860</i>	<i>1950</i>

**Volunteer Opportunities:** Willing to work for DGS? If so, please check all the areas where you could volunteer. Thanks!

- |  |  |                                       |   |
|--|--|---------------------------------------|---|
| <input type="checkbox"/> Hospitality           | <input type="checkbox"/> Computer/Data Entry | <input type="checkbox"/> Newsletter   | <input type="checkbox"/> Board/Committees             |
| <input type="checkbox"/> Work @ special events | <input type="checkbox"/> Present Workshops   | <input type="checkbox"/> Library work | <input type="checkbox"/> Other (please specify) _____ |